

719

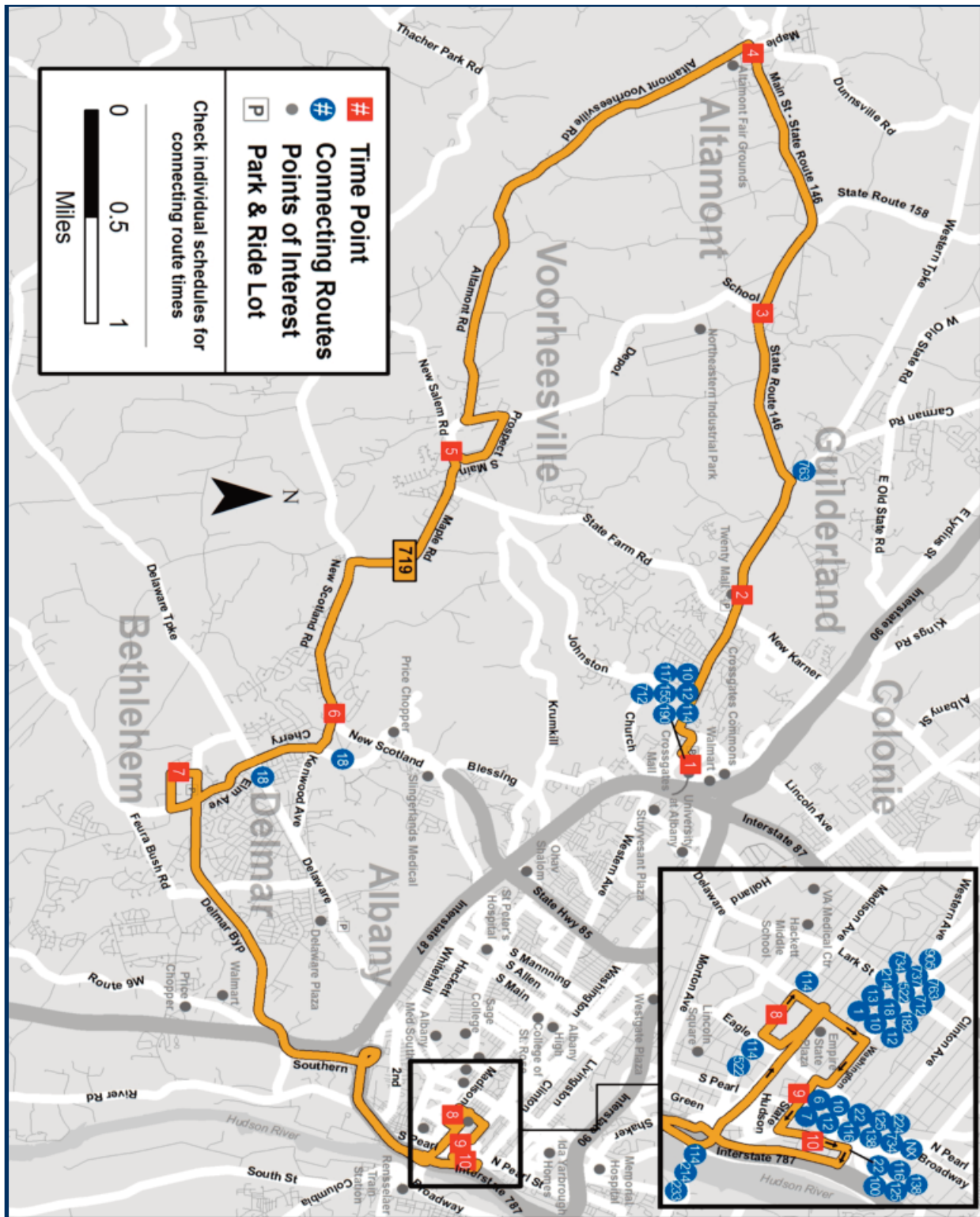
iride™

# Altamont/ Voorheesville

between Crossgates, Delmar, and  
Downtown Albany

EFFECTIVE FEB 5, 2017

# Schedule



## Altamont/Voorheesville to Albany

1	2	3	4	5	6	7	8	9	10
Crossgates Mid Mall	Hamilton Square (20 Mall)	Route 146 & Guiderland Center	Main St & Park Ave	66 Maple Ave	1568 New Scotland Rd	Elm Ave Park & Ride Lot	Empire State Plaza	South Pearl Station	Kiernan Plaza
MONDAY – FRIDAY									
554a	604a	614a	622a	638a	648a	656a	710a	718a	721a
624a	634a	644a	652a	708a	718a	726a	740a	748a	751a
654a	704a	714a	722a	738a	748a	756a	810a	818a	821a
.....	.....	.....	.....	.....	.....	826a	840a	848a	851a

## Albany to Altamont/Voorheesville

8	9	10	7	6	5	4	3	2	1
Empire State Plaza	South Pearl Station	Kiernan Plaza	Elm Ave Park & Ride Lot	Kenwood & New Scotland	Maple Ave & Voorheesville Ave	Main St & Maple Ave	Route 146 & Guiderland Apts	Hamilton Square (20 Mall)	Crossgates Mid Mall
MONDAY – FRIDAY									
410p	418p	421p	436p	444p	454p	510p	518p	528p	538p
440p	448p	451p	506p	514p	524p	540p	548p	558p	608p
510p	518p	521p	536p	544p	554p	610p	618p	628p	638p
540p	548p	551p	606p	.....	.....	.....	.....	.....	.....

## FARE INFORMATION

Fares (U.S. coins and \$1-dollar bills are accepted; fare boxes do not make change)

BusPlus Fare*	.....	\$2.00
BusPlus Half Fare**	.....	\$1.00
Base Fare*	.....	\$1.50
Half Fare**	.....	.75¢
Day Card	.....	\$4.00
Swiper	.....	\$55 (5-day) and \$65 (7-day)
Half Fare Swiper	.....	\$27.50 (5-day) and \$32.50 (7-day)

\***Children** 46" and under ride free when accompanied by a fare paying adult. The limit is three children per adult.

\*\***Citizens** age 65 and over, disabled individuals, Medicare card and CDTA half-fare ID cardholders are entitled to ride for **half fare** on CDTA's fixed route service.

CDTA's policy is to be fully compliant with Title VI of the 1964 Civil Rights Act, which states that no one shall be excluded from participation in, denied the benefits of or discriminated against due to race, color, or national origin. Members of the public may request information on this policy or file a Title VI complaint thru CDTA's website @ [www.cdta.org](http://www.cdta.org) or by calling 518-482-8822.

**The timetable shows WHEN the bus stops.** Times are approximate and depend upon traffic and weather conditions. Arrive at the bus stop 2-3 minutes early to avoid missing the bus.