

233

iride™

Albany / Schodack

between Downtown Albany and Schodack Park & Ride

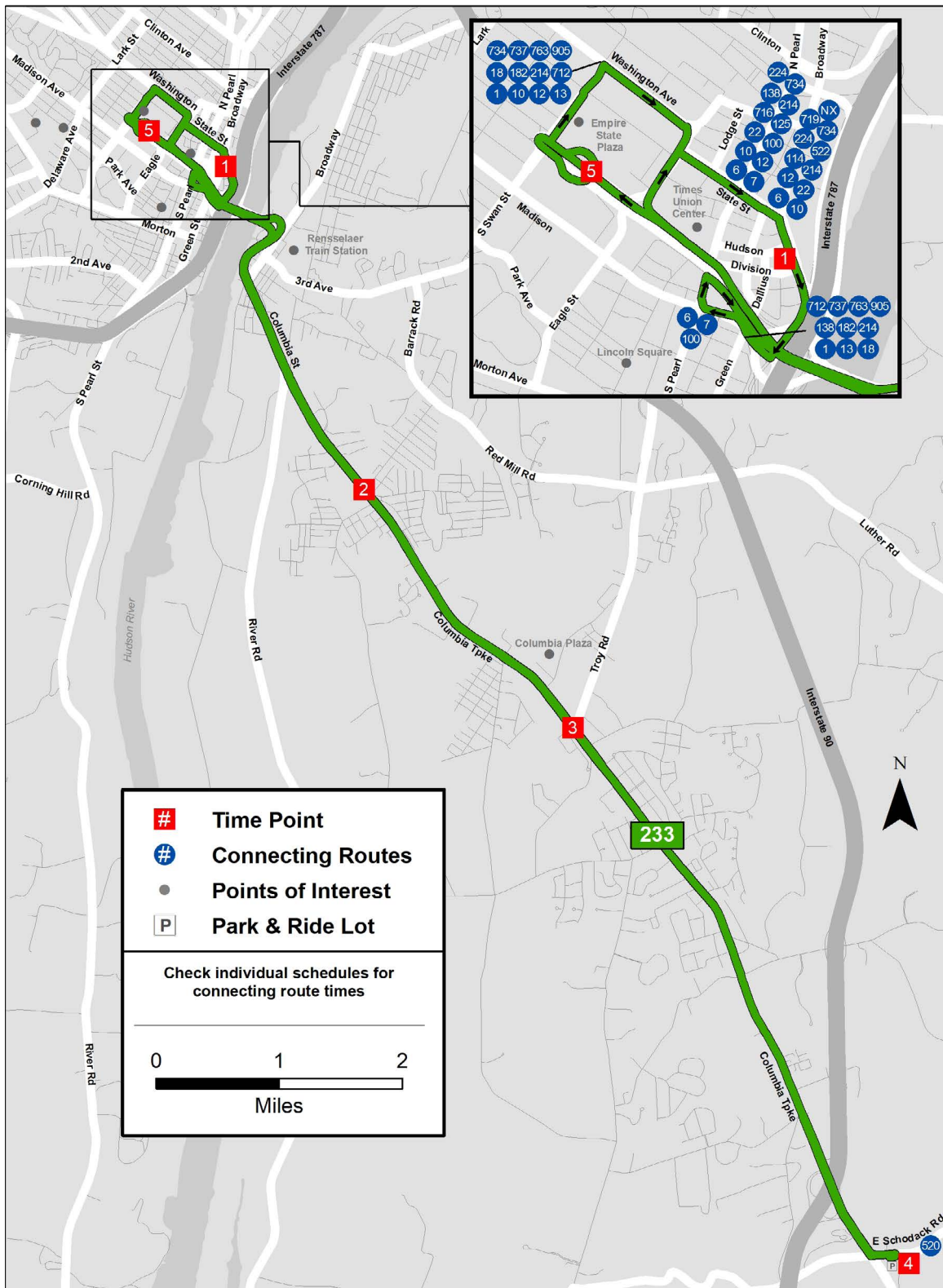
EFFECTIVE APR 7, 2019

Schedule



www.cdta.org

518-482-8822



#	Time Point
#	Connecting Routes
●	Points of Interest
P	Park & Ride Lot
Check individual schedules for connecting route times	
<p>0 1 2 Miles</p>	

From Schodack to Albany

4	3	2	5	1
Schodack Park & Ride	Columbia Tpke & Gilligan Rd	Columbia Tpke & Sherwood Ave	Empire State Plaza Concourse	Hudson & Broadway

MONDAY – FRIDAY

619a	628a	632a	640a	648a
649a	658a	702a	710a	718a
715a	724a	729a	739a	749a
747a	756a	801a	811a	821a
817a	826a	831a	841a	851a
927a	936a	941a	951a	1001a
.....	1040a	1048a
1127a	1136a	1141a	1150a	1158a
.....	1240p	1248p
127p	136p	141p	150p	158p
.....	235p	243p
.....	315p	323p
322p	331p	336p	345p	353p
352p	401p	406p	415p	425p
422p	431p	436p	445p	455p
502p	511p	516p	525p	535p
532p	541p	546p	555p	604p
.....	625p	634p

From Albany to Schodack

1	2	3	4
Hudson & Broadway	Columbia Tpke & Sherwood Ave	590 Columbia Tpke	Schodack Park & Ride

MONDAY – FRIDAY

648a	657a	701a	711a
718a	727a	731a	741a
750a	759a	803a	813a
822a	831a	835a	845a
852a	901a	905a	915a
1050a	1059a	1103a	1113a
1250p	1259p	103p	113p
244p	253p	257p	307p
324p	333p	339p	349p
355p	404p	410p	420p
425p	434p	440p	450p
455p	504p	510p	520p
535p	544p	550p	600p
635p	644p	648p	658p

INSTRUCTIONS

The timetable shows **WHEN** the bus stops. Times are approximate and depend upon traffic and weather conditions. Arrive at the bus stop 2-3 minutes early to avoid missing the bus.

FARE INFORMATION

Fares (US coins and \$1, \$5 – dollar bills are accepted; fareboxes do not make change)

Cash Fares:

Base Fare.....	\$1.50
Base Half Fare	\$0.75
BusPlus Fare.....	\$2.00
BusPlus Half Fare.....	\$1.00

Navigator Smart Card and Mobile App Fares:

Pay As You Go Fare - \$1.30 for each of the first three rides, while the fourth and up are free for the rest of the day.

Pay As You Go Half Fare - \$0.65 for each of the first three rides, while the fourth and up are free for the rest of the day.

Frequent Rider - \$65 for unlimited rides for 31 consecutive days from the first day of use.

Frequent Rider Half Fare - \$32.50 for unlimited rides for 31 consecutive days from the first day of use.

Children 46" and under ride free when accompanied by a fare paying adult.

Citizens age 65 and over, disabled individuals, Medicare card holder, and veterans are entitled to ride for half fare on CDTA's fixed route service. A valid Half Fare Navigator card is required when paying half fare on the bus.

CDTA's policy is to be fully compliant with Title VI of the 1964 Civil Right Act, which states that no one shall be excluded from participation in, denied the benefits of or discriminated against due to race, color, or national origin. Members of public may request information on this policy or file a Title VI complaint thru CDTA's website @ www.cdta.org or by calling (518) 482-8822.