

233

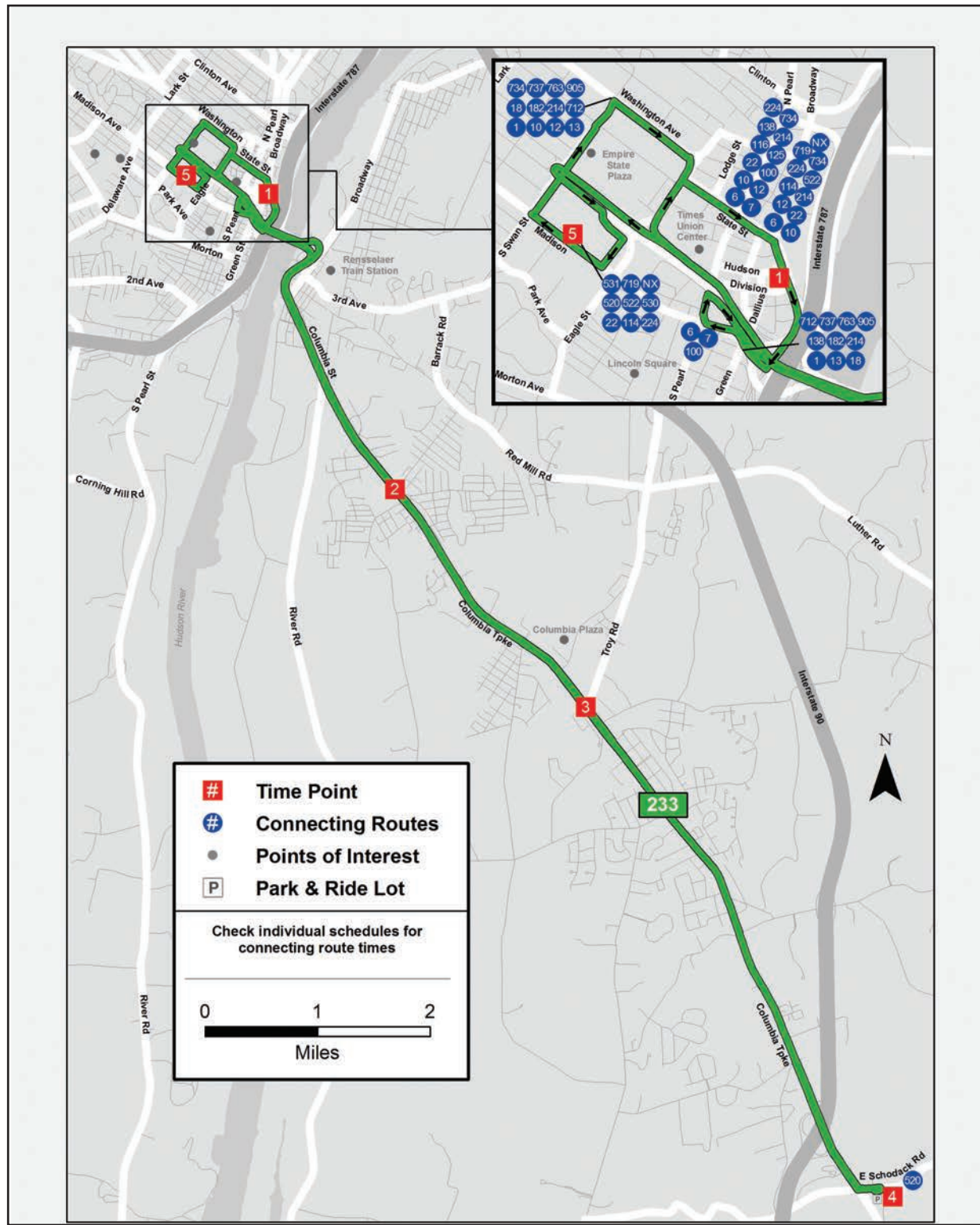
iride™

Albany / Schodack

between Downtown Albany and Schodack Park and Ride

EFFECTIVE MAY 27, 2018

Schedule



From Albany to Schodack

From Schodack to Albany

INSTRUCTIONS

5	1	2	3	4
Madison Ave - ESP	Broadway Station	Columbia Tpke & Sherwood Ave	590 Columbia Tpke	Schodack Park & Ride

4	3	2	5	1
Schodack Park & Ride	Columbia Tpke & Gilligan Rd	Columbia Tpke & Sherwood Ave	Madison Ave - ESP	Broadway Station

The timetable shows **WHEN** the bus stops. Times are approximate and depend upon traffic and weather conditions. Arrive at the bus stop 2-3 minutes early to avoid missing the bus.

MONDAY – FRIDAY

.....	540a	549a	553a	603a
634a	643a	652a	656a	706a
739a	748a	757a	801a	811a
844a	853a	902a	906a	916a
1054a	1103a	1112a	1116a	1126a
104p	113p	122p	126p	136p
209p	218p	227p	231p	241p
314p	323p	332p	336p	346p
345p	354p	403p	407p	417p
420p	429p	438p	442p	452p
445p	454p	503p	507p	517p
525p	534p	543p	547p	557p
629p	638p	647p	651p	701p

MONDAY – FRIDAY

610a	619a	623a	633a
645a	654a	658a	708a	717a
715a	724a	728a	738a
745a	754a	758a	808a	817a
820a	829a	833a	843a
925a	934a	938a	948a	957a
1135a	1144a	1148a	1158a	1207p
145p	154p	158p	208p
250p	259p	303p	313p
355p	404p	409p	420p
415p	424p	429p	440p	450p
500p	509p	514p	525p
515p	524p	529p	540p	550p
605p	614p	618p	628p
615p	624p	628p	638p	647p
710p	719p	723p	733p	742p

FARE INFORMATION

Fares (US coins and \$1, \$5 – dollar bills are accepted; fareboxes do not make change)

Cash Fares:

Base Fare -	\$1.50
Base Half Fare -	\$0.75
BusPlus Fare -	\$2.00
BusPlus Half Fare -	\$1.00

Navigator Smart Card and Mobile App Fares:

Pay As You Go Fare - \$1.30 for each of the first three rides, while the fourth and up are free for the rest of the day.

Pay As You Go Half Fare - \$0.65 for each of the first three rides, while the fourth and up are free for the rest of the day.

Frequent Rider - \$65 for unlimited rides for 31 consecutive days from the first day of use.

Frequent Rider Half Fare - \$32.50 for unlimited rides for 31 consecutive days from the first day of use.

Children 46" and under ride free when accompanied by a fare paying adult.

Citizens age 65 and over, disabled individuals, Medicare card holder, and veterans are entitled to ride for half fare on CDTA's fixed route service. A valid Half Fare *Navigator* card is required when paying half fare on the bus.

CDTA's policy is to be fully compliant with Title VI of the 1964 Civil Right Act, which states that no one shall be excluded from participation in, denied the benefits of or discriminated against due to race, color, or national origin. Members of public may request information on this policy or file a Title VI complaint thru CDTA's website @ www.cdta.org or by calling 518-482-8822.