



University at Albany Intersession Bus Service
 Weekday Bus Service Only
 Service Runs Between Semesters: Spring and Fall

Eastbound



MONDAY - FRIDAY

548p	558p	608p
636p	646p	656p
724p	734p	744p
812p	822p	832p
900p	910p	920p
948p	958p	1008p
1036p	1046p	1056p

Westbound



MONDAY - FRIDAY

612p	619p	632p
700p	707p	720p
748p	755p	808p
836p	843p	856p
924p	931p	944p
1012p	1019p	1032p

FARE INFORMATION

Fares (US coins and \$1, \$5 – dollar bills are accepted; fareboxes do not make change)

Cash Fares:

Base Fare -	\$1.50
Base Half Fare -	\$0.75
BusPlus Fare -	\$2.00
BusPlus Half Fare -	\$1.00

Navigator Smart Card and Mobile App Fares:

- Pay As You Go Fare** - \$1.30 for each of the first three rides, while the fourth and up are free for the rest of the day.
- Pay As You Go Half Fare** - \$0.65 for each of the first three rides, while the fourth and up are free for the rest of the day.
- Frequent Rider** - \$65 for unlimited rides for 31 consecutive days from the first day of use.
- Frequent Rider Half Fare** - \$32.50 for unlimited rides for 31 consecutive days from the first day of use.

Children 46" and under ride free when accompanied by a fare paying adult.

Citizens age 65 and over, disabled individuals, Medicare card holder, and veterans are entitled to ride for half fare on CDTA's fixed route service. A valid Half Fare Navigator card is required when paying half fare on the bus.

CDTA's policy is to be fully compliant with Title VI of the 1964 Civil Right Act, which states that no one shall be excluded from participation in, denied the benefits of or discriminated against due to race, color, or national origin. Members of public may request information on this policy or file a Title VI complaint thru CDTA's website @ www.cdta.org or by calling 518-482-8822.

11

iride™

UAlbany Shuttle

between UAlbany Campus Center and UAlbany Downtown Campus via Western Avenue

Regular service does not run when the University is in intersession. Intersession Schedule is included

Schedule

EFFECTIVE MAY 27, 2018



CDTA

From Slingerlands to Albany

10 9 8 7 6 5 4 3 2 11

Shoprite Slingerlands	Price Chopper	Cherry & Oak Rd	Cherry & Custer Rd	Delaware & Kenwood	Delaware & Elsmere	Delaware & 2nd Ave	Lark & Washington	South Pearl Station	Madison & Green
-----------------------	---------------	-----------------	--------------------	--------------------	--------------------	--------------------	-------------------	---------------------	-----------------

SUNDAY & HOLIDAYS

.....	723a	728a	730a	732a	734a	740a	750a	756a	758a
.....	808a	813a	815a	817a	819a	825a	835a	841a	843a
850a	856a	901a	903a	905a	907a	913a	923a	929a	931a
.....	938a	943a	945a	947a	949a	955a	1005a	1011a	1013a
.....	1023a	1028a	1030a	1032a	1034a	1040a	1050a	1056a	1058a
.....	1108a	1113a	1115a	1117a	1119a	1125a	1135a	1141a	1143a
.....	1153a	1158a	1200p	1202p	1204p	1210p	1220p	1226p	1228p
.....	1238p	1243p	1245p	1247p	1249p	1255p	105p	111p	113p
.....	123p	128p	130p	132p	134p	140p	150p	156p	158p
.....	208p	213p	215p	217p	219p	225p	235p	241p	243p
.....	250p	256p	301p	303p	305p	307p	313p	323p	329p
.....	338p	343p	345p	347p	349p	355p	405p	411p	413p
.....	423p	428p	430p	432p	434p	440p	450p	456p	458p
.....	508p	513p	515p	517p	519p	525p	535p	541p	543p
.....	553p	558p	600p	602p	604p	610p	620p	626p	628p
635p	641p	646p	648p	650p	652p	658p	708p	714p	716p

FARE INFORMATION

Fares (US coins and \$1, \$5 – dollar bills are accepted; fareboxes do not make change)

Cash Fares:

Base Fare -	\$1.50
Base Half Fare -	\$0.75
BusPlus Fare -	\$2.00
BusPlus Half Fare -	\$1.00

Navigator Smart Card and Mobile App Fares:

Pay As You Go Fare - \$1.30 for each of the first three rides, while the fourth and up are free for the rest of the day.

Pay As You Go Half Fare - \$0.65 for each of the first three rides, while the fourth and up are free for the rest of the day.

Frequent Rider - \$65 for unlimited rides for 31 consecutive days from the first day of use.

Frequent Rider Half Fare - \$32.50 for unlimited rides for 31 consecutive days from the first day of use.

Children 46" and under ride free when accompanied by a fare paying adult.

Citizens age 65 and over, disabled individuals, Medicare card holder, and veterans are entitled to ride for half fare on CDTA's fixed route service. A valid Half Fare Navigator card is required when paying half fare on the bus.

CDTA's policy is to be fully compliant with Title VI of the 1964 Civil Right Act, which states that no one shall be excluded from participation in, denied the benefits of or discriminated against due to race, color, or national origin. Members of public may request information on this policy or file a Title VI complaint thru CDTA's website @ www.cdt.org or by calling 518-482-8822.

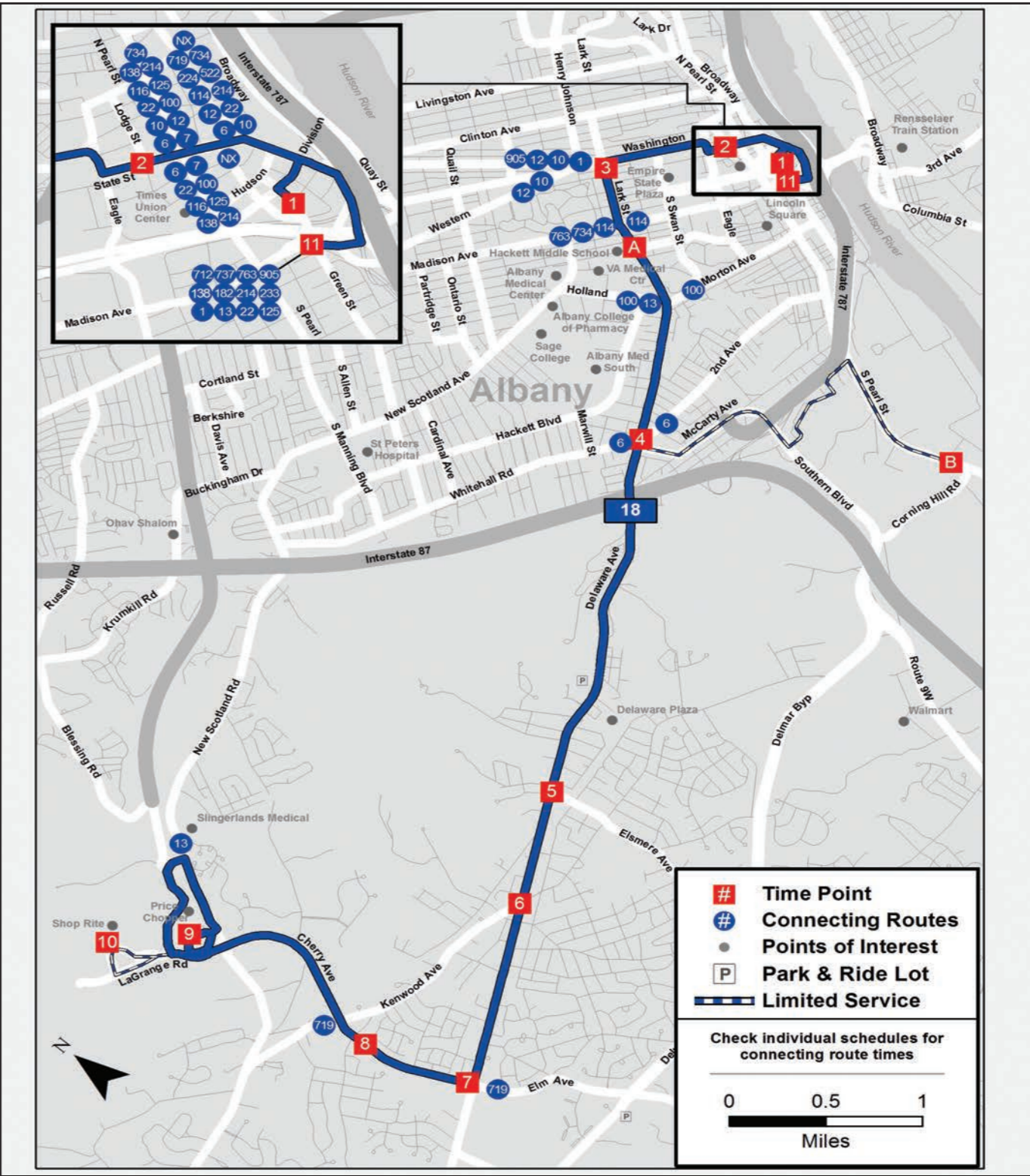
From Albany to Slingerlands

1 2 3 4 5 6 7 8 9 10

Albany Bus Terminal	South Pearl Station	Lark & Spring St	Delaware & Whitehall	Delaware & Herrick	Delaware & Grove	Delaware & Cherry	Cherry & Oak Rd	Price Chopper	Shoprite Slingerlands
---------------------	---------------------	------------------	----------------------	--------------------	------------------	-------------------	-----------------	---------------	-----------------------

SUNDAY & HOLIDAYS

720a	723a	729a	739a	745a	747a	750a	752a	758a
805a	808a	814a	824a	830a	832a	835a	837a	843a	847a
850a	853a	859a	909a	915a	917a	920a	922a	928a
935a	938a	944a	954a	1000a	1002a	1005a	1007a	1013a
1020a	1023a	1029a	1039a	1045a	1047a	1050a	1052a	1058a
1105a	1108a	1114a	1124a	1130a	1132a	1135a	1137a	1143a
1150a	1153a	1159a	1209p	1215p	1217p	1220p	1222p	1228p
1235p	1238p	1244p	1254p	100p	102p	105p	107p	113p
120p	123p	129p	139p	145p	147p	150p	152p	158p
205p	208p	214p	224p	230p	232p	235p	237p	243p	247p
250p	253p	259p	309p	315p	317p	320p	322p	328p
335p	338p	344p	354p	400p	402p	405p	407p	413p
420p	423p	429p	439p	445p	447p	450p	452p	458p
505p	508p	514p	524p	530p	532p	535p	537p	543p
550p	553p	559p	609p	615p	617p	620p	622p	628p	632p



Delaware Avenue

between Slingerlands Shoprite and Downtown Albany via Delmar

EFFECTIVE MAY 27, 2018

Schedule



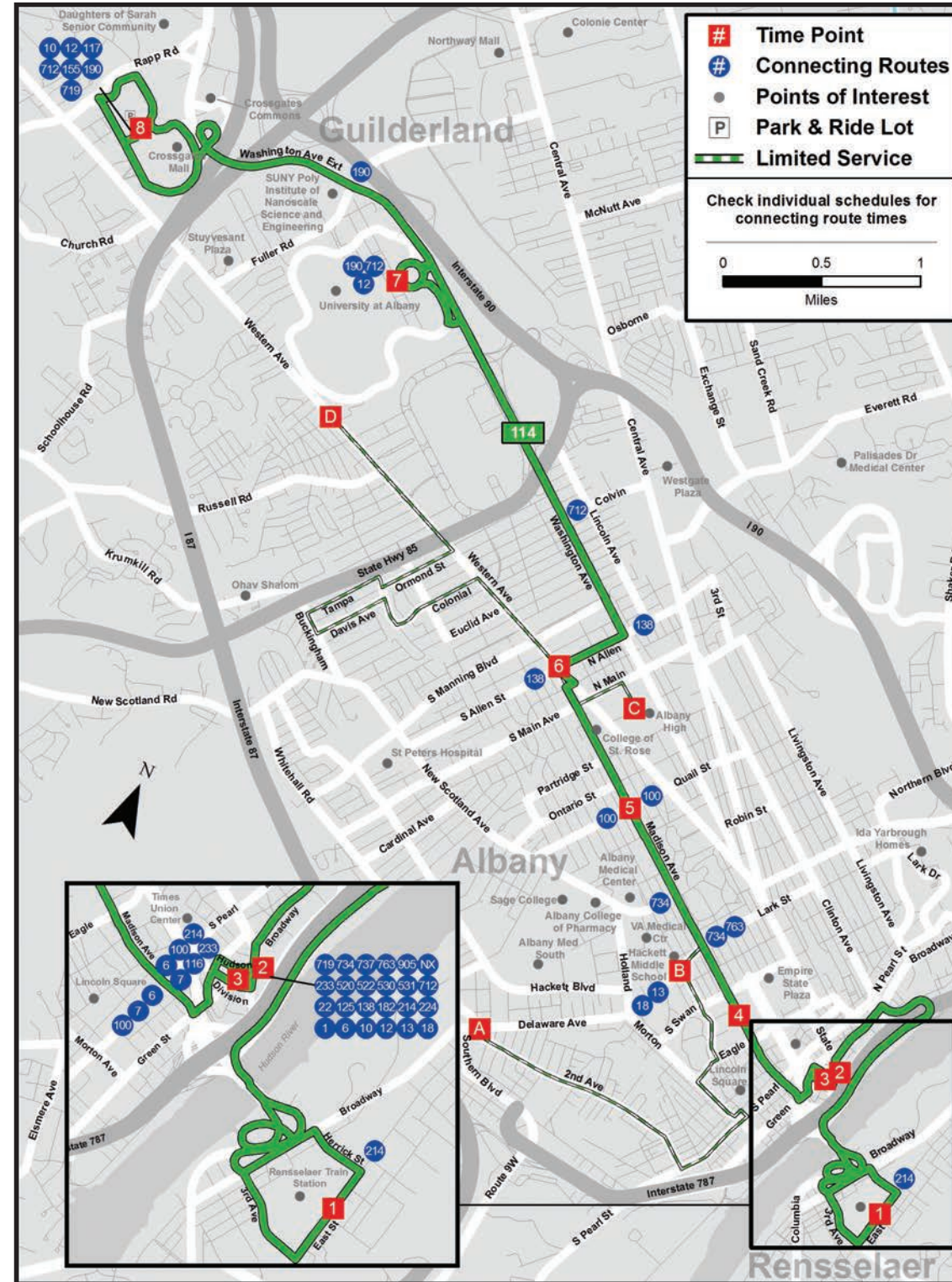
Crossgates to Rensselaer

8 7 6 5 4 3 2 1

Crossgates Mid-Mall	UAlbany Collins Circle	Western Ave & N. Allen St	Madison Ave & Quail St	Madison Ave - ESP	Albany Bus Terminal	Broadway Station	East St & Herrick St (RRS)
---------------------	------------------------	---------------------------	------------------------	-------------------	---------------------	------------------	----------------------------

SATURDAY

730a	739a	747a	752a	758a	802a	803a	812a
830a	839a	847a	852a	858a	902a	903a	912a
930a	939a	947a	952a	958a	1002a	1003a	1012a
1030a	1039a	1047a	1052a	1058a	1102a	1103a	1112a
1130a	1139a	1147a	1152a	1158a	1202p	1203p	1212p
1230p	1239p	1247p	1252p	1258p	102p	103p	112p
130p	139p	147p	152p	158p	202p	203p	212p
230p	239p	247p	252p	258p	302p	303p	312p
330p	339p	347p	352p	358p	402p	403p	412p
430p	439p	447p	452p	458p	502p	503p	512p
530p	539p	547p	552p	558p	602p	603p	612p
630p	639p	647p	652p	658p	702p	703p	712p
730p	739p	747p	752p	758p	802p	803p	812p
830p	839p	847p	852p	858p	902p	903p	912p
930p	939p	947p	952p	958p	1002p	1003p	1012p
1030p	1039p	1047p	1052p	1058p	1102p	1103p	1112p
1130p	1139p	1147p	1152p	1158p	1202a	1203a	1212a



Madison / Washington

between Crossgates Mall, UAlbany, Downtown Albany, and Rensselaer Rail Station

Schedule

EFFECTIVE MAY 27, 2018



Airport to Hamilton Square

11 10 9 8 7 6 5 4 3

Albany Airport	Winners Circle Bellone Door 1	Wolf Rd & Speedway	32 Wolf Rd	Colonie Station	UAlbany Collins Circle	SUNY Polytechnic	Crossgates Mid-Mall	Hamilton Square (20 Mail)
----------------	-------------------------------	--------------------	------------	-----------------	------------------------	------------------	---------------------	---------------------------

SATURDAY

702a	709a	711a	714a	716a	725a	729a	736a	745a
747a	754a	757a	759a	808a	812a	819a	828a
832a	839a	842a	844a	853a	857a	904a	913a
917a	924a	927a	929a	938a	942a	949a	958a
1002a	1009a	1012a	1014a	1023a	1027a	1034a	1043a
1047a	1054a	1057a	1059a	1108a	1112a	1119a	1128a
1132a	1139a	1142a	1144a	1153a	1157a	1204p	1213p
1217p	1224p	1227p	1229p	1238p	1249p	1258p
102p	109p	112p	114p	123p	127p	134p	143p
147p	154p	157p	159p	208p	212p	219p	228p
232p	239p	242p	244p	253p	257p	304p	313p
317p	324p	326p	329p	331p	340p	344p	351p	400p
402p	409p	412p	414p	423p	427p	434p	443p
447p	454p	457p	459p	508p	512p	519p	528p
532p	539p	542p	544p	553p	557p	604p	613p
617p	624p	627p	629p	638p	642p	649p	658p
712p	719p	722p	724p	733p	737p	744p	753p
802p	809p	812p	814p	823p	827p	834p	843p
847p	854p	857p	859p	908p	912p	919p	928p

Wolf Road to Albany Nursing

8 9 11 10a

32 Wolf Rd	Wolf Rd & Wolf Plaza	Albany Airport	Albany Co. Nursing
------------	----------------------	----------------	--------------------

SUNDAY/HOLIDAY

642a	646a	651a	655a
------	------	------	------

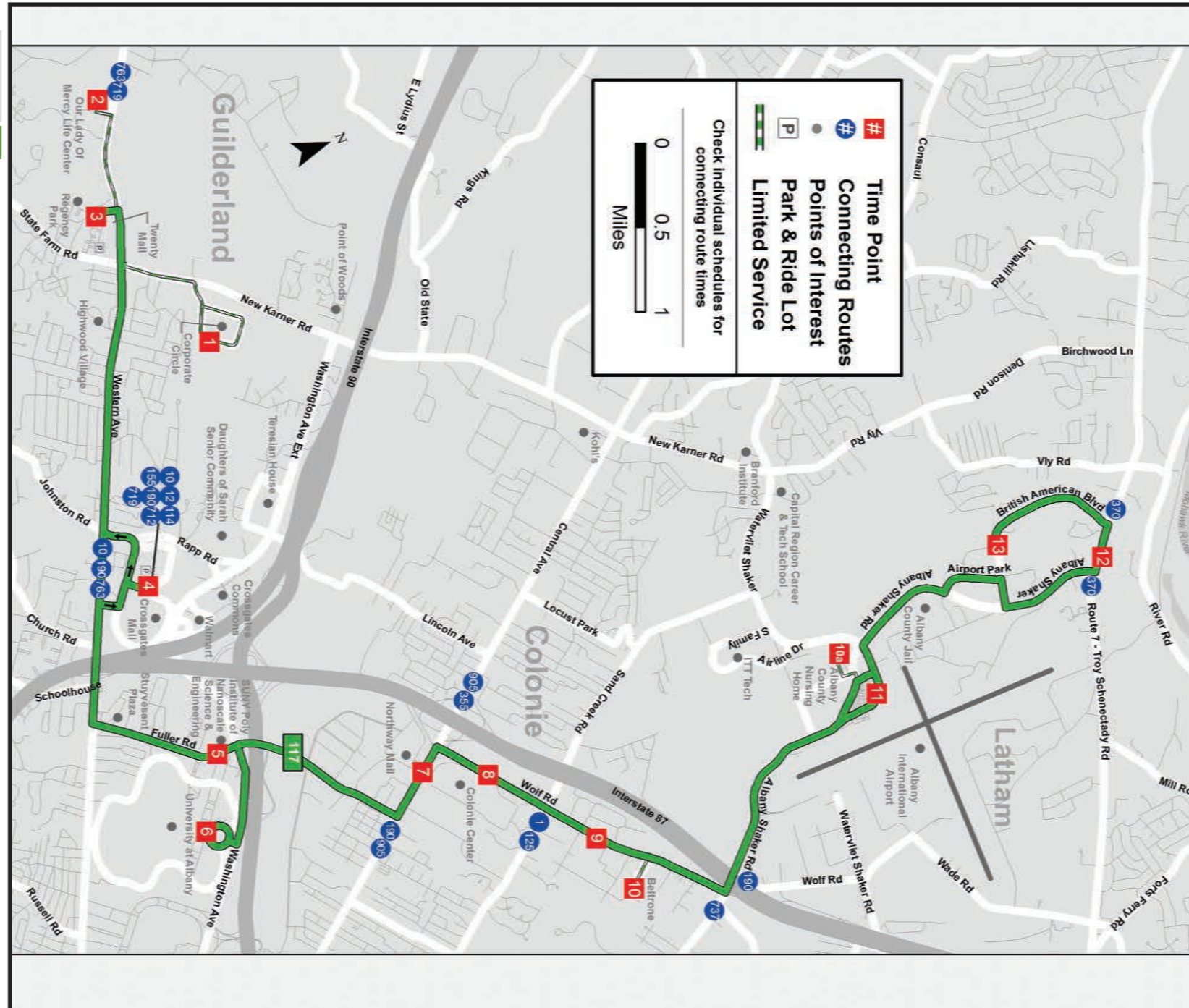
Albany Nursing to Wolf Road

10a 11 9 8

Albany Co. Nursing	Albany Airport	Wolf Rd & Wolf Plaza	32 Wolf Rd
--------------------	----------------	----------------------	------------

SUNDAY/HOLIDAY

705a	709a	714a	719a
------	------	------	------



Guilderland / Colonie Crosstown

between Corporate Circle, Crossgates Mall, Colonie Center, Albany International Airport, and Route 7

EFFECTIVE MAY 27, 2018

Schedule



Corporate Circle to Route 7

1	2	3	4	5	6	7	8	9	10	11	12	13
15 Corporate Circle	Mercy Life Center	Hamilton Square (20 Mall)	Crossgates Mid Mall	SUNY Polytechnic	UAlbany Collins Circle	Colonie Station	Wolf Rd & Colonie Center	Wolf Rd & Wolf Plaza	Winners Cir Beltrone 1	Albany Airport	Rt 7 & Ronald Dr	8 British American Blvd

MONDAY – FRIDAY

.....	620a	628a	638a	642a	651a	653a	656a	658a	706a	712a	715a
.....	722a	725a	733a	743a	747a	756a	758a	801a	808a	814a	817a
.....	825a	833a	843a	847a	856a	858a	901a	908a	914a	917a
.....	925a	933a	943a	947a	956a	958a	1001a	1008a	1014a	1017a
.....	1025a	1033a	1043a	1047a	1056a	1058a	1101a	1108a	1114a	1117a
.....	1125a	1133a	1143a	1147a	1156a	1158a	1201p	1208p	1214p	1217p
.....	1225p	1233p	1243p	1247p	1256p	1258p	101p	108p	114p	117p
.....	120p	128p	138p	142p	151p	153p	156p	203p	209p	212p
.....	220p	228p	238p	242p	251p	253p	256p	303p	309p	312p
.....	317p	320p	328p	339p	343p	353p	355p	358p	405p	411p	414p
347p	350p	358p	409p	413p	423p	425p	428p	435p	441p	444p
417p	420p	428p	439p	443p	453p	455p	458p	500p	507p	513p	516p
.....	525p	533p	544p	548p	558p	600p	603p	610p	616p	619p
.....	620p	628p	638p	642p	651p	653p	656p	703p	709p	712p
.....	720p	728p	738p	742p	751p	753p	756p	803p	809p	812p

Route 7 to Corporate Circle

13	12	11	10	9	8	7	6	5	4	3	2	1
19 British American	Route 7 & Ronald Dr	Albany Airport	Winners Circle Beltrone Door 1	Wolf Rd & Speedway	32 Wolf Rd	Colonie Station	UAlbany Collins Circle	SUNY Polytechnic	Crossgates Mid Mall	Hamilton Sq (20 Mall)	Mercy Life Center	24 Corporate Circle

MONDAY – FRIDAY

.....	630a	639a	642a	648a
625a	628a	635a	643a	645a	648a	650a	659a	704a	711a	718a
725a	728a	735a	742a	745a	747a	756a	801a	808a	815a
825a	828a	835a	842a	845a	847a	856a	901a	908a	915a
925a	928a	935a	942a	945a	947a	956a	1001a	1008a	1015a
1025a	1028a	1035a	1042a	1045a	1047a	1056a	1101a	1108a	1115a
1125a	1128a	1135a	1143a	1145a	1148a	1150a	1159a	1204p	1211p	1218p
1225p	1228p	1235p	1242p	1245p	1247p	1256p	101p	108p	115p
125p	128p	135p	142p	145p	147p	156p	201p	208p	215p
.....	226p	235p	238p
220p	223p	230p	237p	240p	242p	251p	256p	303p	310p
320p	323p	330p	337p	340p	342p	351p	356p	403p	410p
420p	423p	430p	437p	440p	442p	451p	456p	503p	510p
520p	523p	530p	538p	540p	543p	545p	554p	559p	606p	613p
620p	623p	630p	637p	640p	642p	651p	656p	703p	710p
720p	723p	730p	737p	740p	742p	751p	756p	803p	810p
825p	828p	835p	842p	845p	847p	856p	901p	908p	915p

Hamilton Square to Airport

3	4	5	6	7	8	9	10	11
Hamilton Sq (20 Mall)	Crossgates Mid Mall	SUNY Polytechnic	UAlbany Collins Circle	Colonie Station	Wolf Rd & Colonie Center	Wolf Rd & Wolf Plaza	Winners Circle Beltrone 1	Albany Airport

SATURDAY

615a	622a	631a	635a	644a	646a	649a	651a	657a
705a	712a	721a	725a	734a	736a	739a	745a
750a	757a	806a	810a	819a	821a	824a	830a
835a	842a	851a	855a	904a	906a	909a	915a
920a	927a	936a	940a	949a	951a	954a	1000a
1005a	1012a	1021a	1025a	1034a	1036a	1039a	1045a
1050a	1057a	1106a	1110a	1119a	1121a	1124a	1130a
1135a	1142a	1151a	1155a	1204p	1206p	1209p	1215p
1220p	1227p	1236p	1240p	1249p	1251p	1254p	100p
105p	112p	121p	125p	134p	136p	139p	145p
150p	157p	206p	210p	219p	221p	224p	230p
230p	237p	246p	250p	259p	301p	304p	306p	312p
320p	327p	336p	340p	349p	351p	354p	400p
405p	412p	421p	425p	434p	436p	439p	445p
450p	457p	506p	510p	519p	521p	524p	530p
535p	542p	551p	555p	604p	606p	609p	615p
620p	627p	636p	640p	649p	651p	654p	700p
720p	727p	736p	740p	749p	751p	754p	800p
805p	812p	821p	825p	834p	836p	839p	845p

FARE INFORMATION

Fares (US coins and \$1, \$5 – dollar bills are accepted; fareboxes do not make change) Children 46” and under ride free when accompanied by a fare paying adult.

Cash Fares:

Base Fare -	\$1.50
Base Half Fare -	\$0.75
BusPlus Fare -	\$2.00
BusPlus Half Fare -	\$1.00

Navigator Smart Card and Mobile App Fares:

Pay As You Go Fare - \$1.30 for each of the first three rides, while the fourth and up are free for the rest of the day.

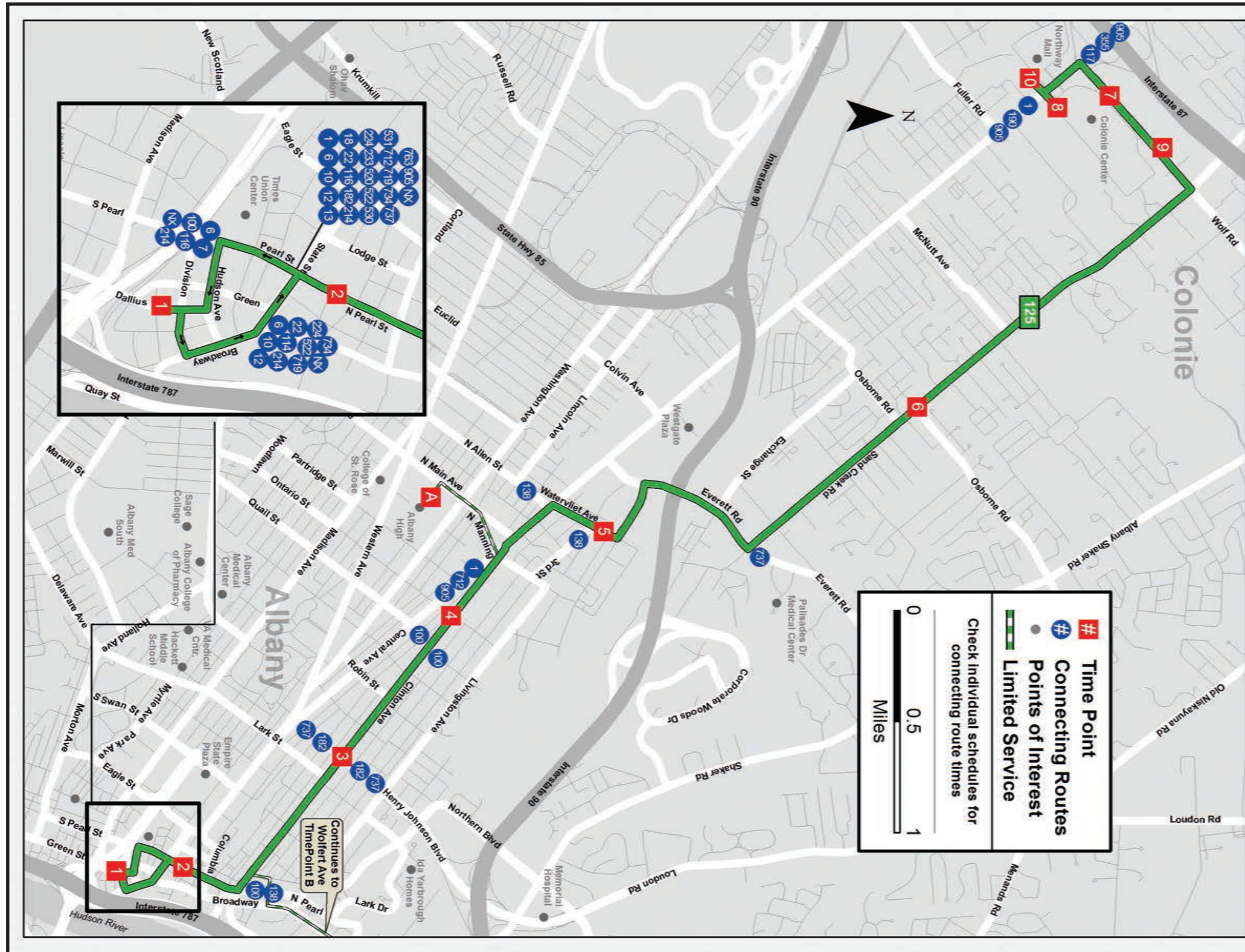
Pay As You Go Half Fare - \$0.65 for each of the first three rides, while the fourth and up are free for the rest of the day.

Frequent Rider - \$65 for unlimited rides for 31 consecutive days from the first day of use.

Frequent Rider Half Fare - \$32.50 for unlimited rides for 31 consecutive days from the first day of use.

Citizens age 65 and over, disabled individuals, Medicare card holder, and veterans are entitled to ride for half fare on CDTA’s fixed route service. A valid Half Fare Navigator card is required when paying half fare on the bus.

CDTA’s policy is to be fully compliant with Title VI of the 1964 Civil Right Act, which states that no one shall be excluded from participation in, denied the benefits of or discriminated against due to race, color, or national origin. Members of public may request information on this policy or file a Title VI complaint thru CDTA’s website @ www.cdta.org or by calling 518-482-8822.



FARE INFORMATION

Fares (US coins and \$1, \$5 – dollar bills are accepted; fareboxes do not make change)

Cash Fares:

Base Fare -	\$1.50
Base Half Fare -	\$0.75
BusPlus Fare -	\$2.00
BusPlus Half Fare -	\$1.00

Navigator Smart Card and Mobile App Fares:

Pay As You Go Fare - \$1.30 for each of the first three rides, while the fourth and up are free for the rest of the day.

Pay As You Go Half Fare - \$0.65 for each of the first three rides, while the fourth and up are free for the rest of the day.

Frequent Rider - \$65 for unlimited rides for 31 consecutive days from the first day of use.

Frequent Rider Half Fare - \$32.50 for unlimited rides for 31 consecutive days from the first day of use.

Children 46" and under ride free when accompanied by a fare paying adult.

Citizens age 65 and over, disabled individuals, Medicare card holder, and veterans are entitled to ride for half fare on CDTA's fixed route service. A valid Half Fare Navigator card is required when paying half fare on the bus.

CDTA's policy is to be fully compliant with Title VI of the 1964 Civil Right Act, which states that no one shall be excluded from participation in, denied the benefits of or discriminated against due to race, color, or national origin. Members of public may request information on this policy or file a Title VI complaint thru CDTA's website @ www.cdta.org or by calling 518-482-8822.

125

iride™

Clinton / Sand Creek Road

between Colonie Center and Downtown Albany

Schedule

EFFECTIVE MAY 27, 2018



CDTA

www.cdta.org

518-482-8822

From Colonie Center to Albany

8 7 6 5 A 4 3 2 1 B

Colonie Stoin	Colonie Ctr. @ Wolf Rd.	Sand Creek & Admiral	Watervliet Ave & Essex St	Albany High School	Clinton & Ontario	Clinton & Henry Johnson	N. Pearl St & Ten Eyck	Albany Bus Terminal	Broadway & Wolfert
---------------	-------------------------	----------------------	---------------------------	--------------------	-------------------	-------------------------	------------------------	---------------------	--------------------

MONDAY – FRIDAY

615a	618a	625a	632a	638a	642a	648a	651a
645a	648a	655a	702a	708a	712a	718a	721a
715a	718a	725a	732a	738a	742a	748a	751a
745a	748a	755a	802a	808a	812a	818a	821a
815a	818a	825a	832a	838a	842a	848a	851a
845a	848a	855a	902a	908a	912a	918a	921a
915a	918a	925a	932a	938a	942a	948a	951a
945a	948a	955a	1002a	1008a	1012a	1018a	1021a
1030a	1033a	1040a	1047a	1053a	1057a	1103a	1106a
1115a	1118a	1125a	1132a	1138a	1142a	1148a	1151a
1200p	1203p	1210p	1217p	1223p	1227p	1233p	1236p
1245p	1248p	1255p	102p	108p	112p	118p	121p
130p	133p	140p	147p	153p	157p	203p	206p
215p	218p	225p	232p	238p	242p	248p	251p
.....	S300p	s306p	S320p
300p	304p	312p	320p	326p	331p	338p	341p
345p	349p	357p	405p	411p	416p	423p	426p
415p	419p	427p	435p	441p	446p	453p	456p
440p	444p	452p	500p	506p	511p	518p	521p
505p	509p	517p	525p	531p	536p	543p	546p
530p	534p	542p	550p	556p	601p	608p	611p
555p	559p	607p	615p	621p	626p	633p	636p
620p	623p	630p	637p	643p	647p	653p	656p
645p	648p	655p	702p	708p	712p	718p	721p
730p	733p	740p	747p	753p	757p	803p	806p
815p	818p	825p	832p	838p	842p	848p	851p
900p	903p	910p	917p	923p	927p	933p	936p
945p	948p	955p	1002p	1008p	1012p	1018p	1021p
1115p	1118p	1125p	1132p	1138p	1142p	1148p	1151p

From Albany to Colonie Center

1 2 3 4 5 6 9 10 8

Albany Bus Terminal	20 N. Pearl St (Rite Aid)	Clinton & Henry Johnson	Clinton & Ontario	Watervliet Ave & Essex St	Sand Creek & Osborne	50 Wolf Road	Colonie Stoin Northway Mall	Colonie Stoin
---------------------	---------------------------	-------------------------	-------------------	---------------------------	----------------------	--------------	-----------------------------	---------------

MONDAY – FRIDAY

.....	551a	557a	604a	607a	611a
600a	603a	609a	613a	619a	625a	632a	635a	639a
630a	633a	639a	643a	649a	655a	702a	705a	709a
700a	703a	709a	713a	719a	725a	732a	735a	739a
730a	733a	739a	743a	749a	755a	802a	805a	809a
800a	803a	809a	813a	819a	825a	832a	835a	839a
830a	833a	839a	843a	849a	855a	902a	905a	909a
900a	903a	909a	913a	919a	925a	932a	935a	939a
945a	948a	954a	958a	1004a	1010a	1017a	1020a	1024a
1030a	1033a	1039a	1043a	1049a	1055a	1102a	1105a	1109a
1115a	1118a	1124a	1128a	1134a	1140a	1147a	1150a	1154a
1200p	1203p	1209p	1213p	1219p	1225p	1232p	1235p	1239p
1245p	1248p	1254p	1258p	104p	110p	117p	120p	124p
130p	133p	139p	143p	149p	155p	202p	205p	209p
215p	218p	224p	228p	234p	240p	247p	250p	254p
300p	304p	311p	316p	322p	329p	337p	342p	347p
345p	349p	356p	401p	407p	414p	422p	427p	432p
410p	414p	421p	426p	432p	439p	447p	452p	457p
435p	439p	446p	451p	457p	504p	512p	517p	522p
500p	504p	511p	516p	522p	529p	537p	542p	547p
525p	529p	536p	541p	547p	554p	602p	607p	612p
550p	554p	601p	606p	612p	619p	627p	632p	637p
615p	618p	624p	628p	634p	640p	647p	650p	654p
645p	648p	654p	658p	704p	710p	717p	720p	724p
730p	733p	739p	743p	749p	755p	802p	805p	809p
815p	818p	824p	828p	834p	840p	847p	850p	854p
900p	903p	909p	913p	919p	925p	932p	935p	939p
1030p	1033p	1039p	1043p	1049p	1055p	1102p	1105p	1109p

From Colonie Center to Albany

8 7 6 5 4 3 2 1

Colonie Stoin	Colonie Ctr. @ Wolf Rd.	Sand Creek & Admiral	Watervliet Ave & Essex St	Clinton & Ontario	Clinton & Henry Johnson	N. Pearl St & Ten Eyck Plaza	Albany Bus Terminal
---------------	-------------------------	----------------------	---------------------------	-------------------	-------------------------	------------------------------	---------------------

SATURDAY

700a	703a	710a	717a	723a	727a	733a	736a
745a	748a	755a	802a	808a	812a	818a	821a
830a	833a	840a	847a	853a	857a	903a	906a
915a	918a	925a	932a	938a	942a	948a	951a
1000a	1003a	1010a	1017a	1023a	1027a	1033a	1036a
1045a	1048a	1055a	1102a	1108a	1112a	1118a	1121a
1130a	1133a	1140a	1147a	1153a	1157a	1203p	1206p
1215p	1218p	1225p	1232p	1238p	1242p	1248p	1251p
100p	103p	110p	117p	123p	127p	133p	136p
145p	148p	155p	202p	208p	212p	218p	221p
230p	233p	240p	247p	253p	257p	303p	306p
315p	318p	325p	332p	338p	342p	348p	351p
400p	403p	410p	417p	423p	427p	433p	436p
445p	448p	455p	502p	508p	512p	518p	521p
530p	533p	540p	547p	553p	557p	603p	606p
615p	618p	625p	632p	638p	642p	648p	651p
700p	703p	710p	717p	723p	727p	733p	736p
745p	748p	755p	802p	808p	812p	818p	821p
830p	833p	840p	847p	853p	857p	903p	906p
915p	918p	925p	932p	938p	942p	948p	951p
1000p	1003p	1010p	1017p	1023p	1027p	1033p	1036p
1045p	1048p	1055p	1102p	1108p	1112p	1118p	1121p

From Albany to Colonie Center

1 2 3 4 5 6 9 10 8

Albany Bus Terminal	20 N. Pearl St (Rite Aid)	Clinton & Henry Johnson	Clinton & Ontario	Watervliet Ave & Essex St	Sand Creek & Osborne	50 Wolf Road	Colonie Stoin Northway Mall	Colonie Stoin
---------------------	---------------------------	-------------------------	-------------------	---------------------------	----------------------	--------------	-----------------------------	---------------

SATURDAY

.....	636a	642a	649a	652a	656a
700a	703a	709a	713a	719a	725a	732a	735a	739a
745a	748a	754a	758a	804a	810a	817a	820a	824a
830a	833a	839a	843a	849a	855a	902a	905a	909a
915a	918a	924a	928a	934a	940a	947a	950a	954a
1000a	1003a	1009a	1013a	1019a	1025a	1032a	1035a	1039a
1045a	1048a	1054a	1058a	1104a	1110a	1117a	1120a	1124a
1130a	1133a	1139a	1143a	1149a	1155a	1202p	1205p	1209p
1215p	1218p	1224p	1228p	1234p	1240p	1247p	1250p	1254p
100p	103p	109p	113p	119p	125p	132p	135p	139p
145p	148p	154p	158p	204p	210p	217p	220p	224p
230p	233p	239p	243p	249p	255p	302p	305p	309p
315p	318p	324p	328p	334p	340p	347p	350p	354p
400p	403p	409p	413p	419p	425p	432p	435p	439p
445p	448p	454p	458p	504p	510p	517p	520p	524p
530p	533p	539p	543p	549p	555p	602p	605p	609p
615p	618p	624p	628p	634p	640p	647p	650p	654p
700p	703p	709p	713p	719p	725p	732p	735p	739p
745p	748p	754p	758p	804p	810p	817p	820p	824p
830p	833p	839p	843p	849p	855p	902p	905p	909p
915p	918p	924p	928p	934p	940p	947p	950p	954p
1000p	1003p	1009p	1013p	1019p	1025p	1032p	1035p	1039p

S Trip operates when school is in session.

233

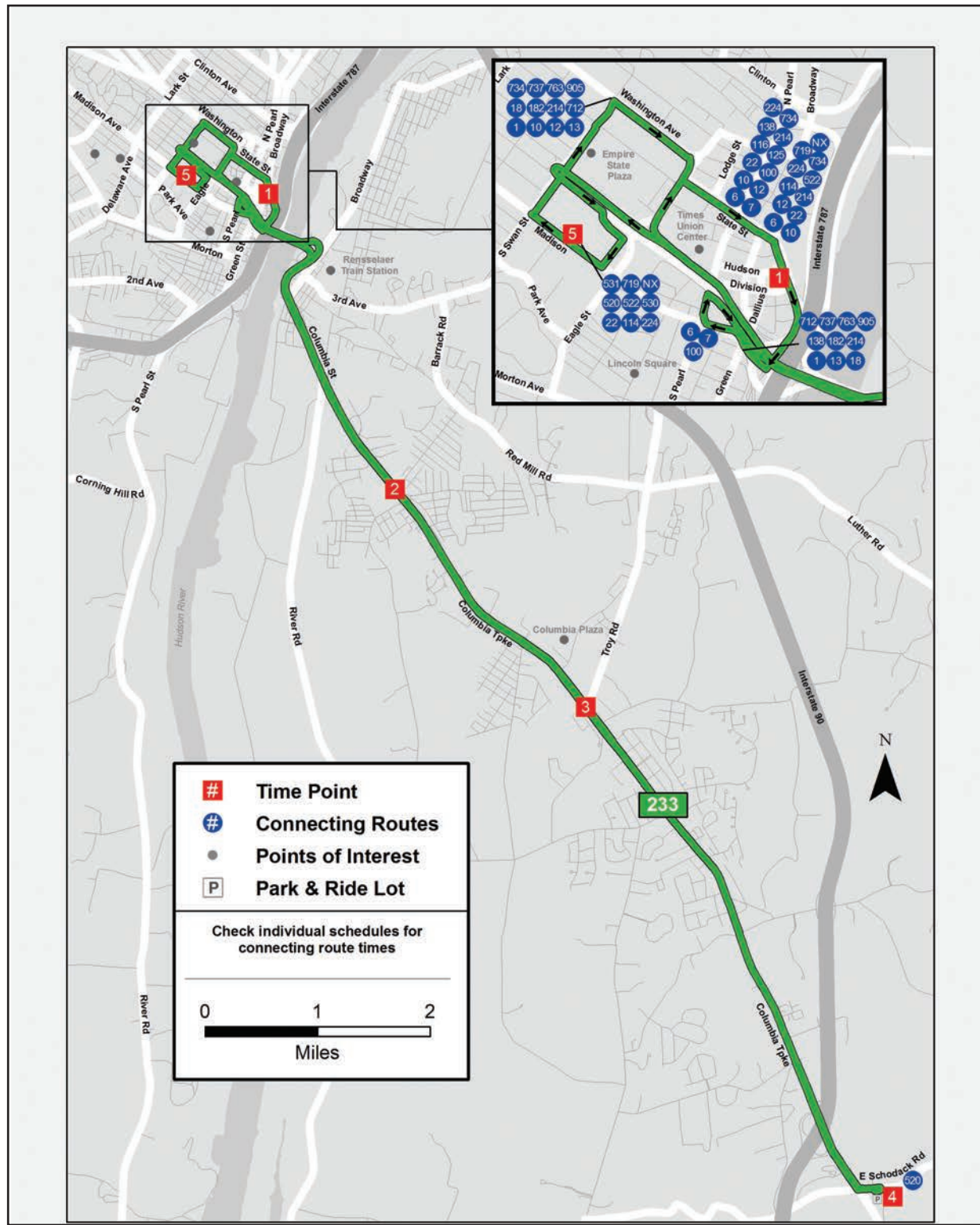
iride™

Albany / Schodack

between Downtown Albany and Schodack Park and Ride

EFFECTIVE MAY 27, 2018

Schedule



From Albany to Schodack

From Schodack to Albany

INSTRUCTIONS

5	1	2	3	4
Madison Ave - ESP	Broadway Station	Columbia Tpke & Sherwood Ave	590 Columbia Tpke	Schodack Park & Ride

4	3	2	5	1
Schodack Park & Ride	Columbia Tpke & Gilligan Rd	Columbia Tpke & Sherwood Ave	Madison Ave - ESP	Broadway Station

The timetable shows **WHEN** the bus stops. Times are approximate and depend upon traffic and weather conditions. Arrive at the bus stop 2-3 minutes early to avoid missing the bus.

MONDAY – FRIDAY

.....	540a	549a	553a	603a
634a	643a	652a	656a	706a
739a	748a	757a	801a	811a
844a	853a	902a	906a	916a
1054a	1103a	1112a	1116a	1126a
104p	113p	122p	126p	136p
209p	218p	227p	231p	241p
314p	323p	332p	336p	346p
345p	354p	403p	407p	417p
420p	429p	438p	442p	452p
445p	454p	503p	507p	517p
525p	534p	543p	547p	557p
629p	638p	647p	651p	701p

MONDAY – FRIDAY

610a	619a	623a	633a
645a	654a	658a	708a	717a
715a	724a	728a	738a
745a	754a	758a	808a	817a
820a	829a	833a	843a
925a	934a	938a	948a	957a
1135a	1144a	1148a	1158a	1207p
145p	154p	158p	208p
250p	259p	303p	313p
355p	404p	409p	420p
415p	424p	429p	440p	450p
500p	509p	514p	525p
515p	524p	529p	540p	550p
605p	614p	618p	628p
615p	624p	628p	638p	647p
710p	719p	723p	733p	742p

FARE INFORMATION

Fares (US coins and \$1, \$5 – dollar bills are accepted; fareboxes do not make change)

Cash Fares:

Base Fare -	\$1.50
Base Half Fare -	\$0.75
BusPlus Fare -	\$2.00
BusPlus Half Fare -	\$1.00

Navigator Smart Card and Mobile App Fares:

Pay As You Go Fare - \$1.30 for each of the first three rides, while the fourth and up are free for the rest of the day.

Pay As You Go Half Fare - \$0.65 for each of the first three rides, while the fourth and up are free for the rest of the day.

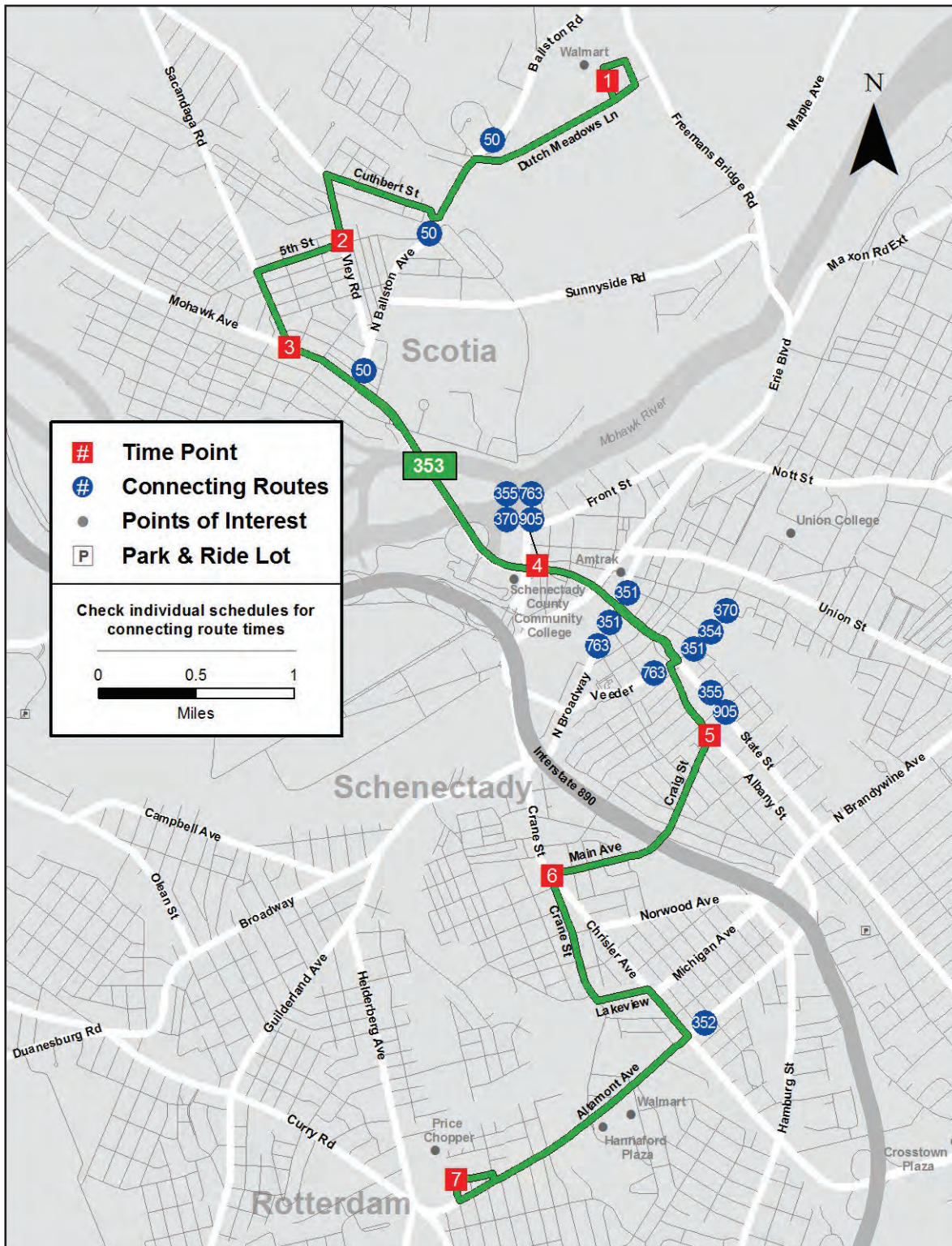
Frequent Rider - \$65 for unlimited rides for 31 consecutive days from the first day of use.

Frequent Rider Half Fare - \$32.50 for unlimited rides for 31 consecutive days from the first day of use.

Children 46" and under ride free when accompanied by a fare paying adult.

Citizens age 65 and over, disabled individuals, Medicare card holder, and veterans are entitled to ride for half fare on CDTA's fixed route service. A valid Half Fare *Navigator* card is required when paying half fare on the bus.

CDTA's policy is to be fully compliant with Title VI of the 1964 Civil Right Act, which states that no one shall be excluded from participation in, denied the benefits of or discriminated against due to race, color, or national origin. Members of public may request information on this policy or file a Title VI complaint thru CDTA's website @ www.cdta.org or by calling 518-482-8822.



FARE INFORMATION

Fares (US coins and \$1, \$5 – dollar bills are accepted; fareboxes do not make change)

Cash Fares:

Base Fare -	\$1.50
Base Half Fare -	\$0.75
BusPlus Fare -	\$2.00
BusPlus Half Fare -	\$1.00

Navigator Smart Card and Mobile App Fares:

Pay As You Go Fare - \$1.30 for each of the first three rides, while the fourth and up are free for the rest of the day.

Pay As You Go Half Fare - \$0.65 for each of the first three rides, while the fourth and up are free for the rest of the day.

Frequent Rider - \$65 for unlimited rides for 31 consecutive days from the first day of use.

Frequent Rider Half Fare - \$32.50 for unlimited rides for 31 consecutive days from the first day of use.

Children 46" and under ride free when accompanied by a fare paying adult.

Citizens age 65 and over, disabled individuals, Medicare card holder, and veterans are entitled to ride for half fare on CDTA's fixed route service. A valid Half Fare Navigator card is required when paying half fare on the bus.

CDTA's policy is to be fully compliant with Title VI of the 1964 Civil Right Act, which states that no one shall be excluded from participation in, denied the benefits of or discriminated against due to race, color, or national origin. Members of public may request information on this policy or file a Title VI complaint thru CDTA's website @ www.cdta.org or by calling 518-482-8822.

The timetable shows WHEN the bus stops. Times are approximate and depend upon traffic and weather conditions. Arrive at the bus stop 2-3 minutes early to avoid missing the bus.



Scotia / Mont Pleasant

between Glenville Walmart,
Hamilton Hill and Altamont Avenue

EFFECTIVE MAY 27, 2018

Schedule



Eastbound

1	2	3	4	5	6	7
Walmart Glenville	Vley Road & 5th Street	Sacandaga Rd & Mohawk Ave	Gateway Plaza	Albany Street & Hulett Street	Main Ave & Crane St	Altamont Ave & Price Chopper

MONDAY - FRIDAY

500a	506a	509a	515a	521a	525a	534a
545a	551a	554a	600a	606a	610a	619a
630a	636a	639a	645a	651a	655a	704a
715a	721a	724a	728a	737a	742a	751a
800a	806a	809a	813a	822a	827a	836a
845a	851a	854a	858a	907a	912a	921a
915a	921a	924a	928a	937a	942a	951a
945a	951a	954a	958a	1007a	1012a	1021a
1015a	1021a	1024a	1028a	1037a	1042a	1051a
1045a	1051a	1054a	1058a	1107a	1112a	1121a
1115a	1121a	1124a	1128a	1137a	1142a	1151a
1145a	1151a	1154a	1158a	1207p	1212p	1221p
1215p	1221p	1224p	1228p	1237p	1242p	1251p
1245p	1251p	1254p	1258p	107p	112p	121p
115p	121p	124p	128p	137p	142p	151p
145p	151p	154p	158p	207p	212p	221p
215p	221p	224p	228p	237p	242p	251p
245p	251p	254p	258p	307p	312p	321p
315p	321p	324p	330p	339p	344p	353p
345p	351p	354p	400p	409p	414p	423p
415p	421p	424p	430p	439p	444p	453p
445p	451p	454p	500p	509p	514p	523p
515p	521p	524p	530p	539p	544p	553p
545p	551p	554p	600p	609p	614p	623p
630p	636p	638p	642p	650p	655p	703p
715p	721p	723p	727p	735p	740p	748p
800p	806p	808p	812p	820p	825p	833p
845p	851p	853p	857p	905p	910p	918p
1015p	1021p	1023p	1027p	1035p	1040p	1048p

Westbound

7	6	5	4	3	2	1
Altamont Ave & Price Chopper	Main Ave & Crane St	Albany Street & Hulett Street	State St & Washington Ave	Mohawk Ave & Sacandaga Rd	5th Street & Vley Road	Walmart Glenville

MONDAY - FRIDAY

545a	555a	600a	608a	612a	614a	620a
630a	640a	645a	653a	657a	659a	705a
715a	725a	730a	738a	742a	744a	750a
800a	810a	815a	823a	827a	829a	835a
845a	855a	900a	908a	912a	914a	920a
930a	941a	946a	955a	959a	1002a	1008a
1000a	1011a	1016a	1025a	1029a	1032a	1038a
1030a	1041a	1046a	1055a	1059a	1102a	1108a
1100a	1111a	1116a	1125a	1129a	1132a	1138a
1130a	1141a	1146a	1155a	1159a	1202p	1208p
1200p	1211p	1216p	1225p	1229p	1232p	1238p
1230p	1241p	1246p	1255p	1259p	102p	108p
100p	111p	116p	125p	129p	132p	138p
130p	141p	146p	155p	159p	202p	208p
200p	211p	216p	225p	229p	232p	238p
230p	241p	246p	255p	259p	302p	308p
300p	311p	316p	325p	329p	332p	338p
330p	341p	346p	355p	359p	402p	408p
400p	411p	416p	425p	429p	432p	438p
430p	441p	446p	455p	459p	502p	508p
500p	511p	516p	525p	529p	532p	538p
530p	541p	546p	555p	559p	602p	608p
600p	610p	614p	621p	625p	628p	634p
630p	640p	644p	651p	655p	658p	704p
715p	725p	729p	736p	740p	743p	749p
800p	810p	814p	821p	825p	828p	834p
845p	855p	859p	906p	910p	913p	919p
930p	939p	943p	949p	952p	954p	1000p
1100p	1109p	1113p	1119p	1122p	1124p	1130p

Eastbound

1	2	3	4	5	6	7
Walmart Glenville	Vley Road & 5th Street	Sacandaga Rd & Mohawk Ave	Gateway Plaza	Albany Street & Hulett Street	Main Ave & Crane St	Altamont Ave & Price Chopper

SATURDAY

900a	906a	909a	913a	922a	927a	936a
945a	951a	954a	958a	1007a	1012a	1021a
1030a	1036a	1039a	1043a	1052a	1057a	1106a
1115a	1121a	1124a	1128a	1137a	1142a	1151a
1200p	1206p	1209p	1213p	1222p	1227p	1236p
1245p	1251p	1254p	1258p	107p	112p	121p
130p	136p	139p	143p	152p	157p	206p
215p	221p	224p	228p	237p	242p	251p
300p	306p	309p	313p	322p	327p	336p
345p	351p	354p	358p	407p	412p	421p
430p	436p	439p	443p	452p	457p	506p
515p	521p	524p	528p	537p	542p	551p
600p	606p	608p	612p	620p	625p	633p
645p	651p	653p	657p	705p	710p	718p
730p	736p	738p	742p

Westbound

7	6	5	4	3	2	1
Altamont Ave & Price Chopper	Main Ave & Crane St	Albany Street & Hulett Street	State St & Washington Ave	Mohawk Ave & Sacandaga Rd	5th Street & Vley Road	Walmart Glenville

SATURDAY

945a	956a	1001a	1010a	1014a	1017a	1023a
1030a	1041a	1046a	1055a	1059a	1102a	1108a
1115a	1126a	1131a	1140a	1144a	1147a	1153a
1200p	1211p	1216p	1225p	1229p	1232p	1238p
1245p	1256p	101p	110p	114p	117p	123p
130p	141p	146p	155p	159p	202p	208p
215p	226p	231p	240p	244p	247p	253p
300p	311p	316p	325p	329p	332p	338p
345p	356p	401p	410p	414p	417p	423p
430p	441p	446p	455p	459p	502p	508p
515p	526p	531p	540p	544p	547p	553p
600p	610p	614p	621p	625p	628p	634p
645p	655p	659p	706p	710p	713p	719p
730p	740p	744p	751p

Eastbound

1	2	3	4	5	6	7
Walmart Glenville	Vley Road & 5th Street	Sacandaga Rd & Mohawk Ave	Gateway Plaza	Albany Street & Hulett Street	Main Ave & Crane St	Altamont Ave & Price Chopper

SUNDAY

945a	951a	954a	958a	1007a	1012a	1021a
1030a	1036a	1039a	1043a	1052a	1057a	1106a
1115a	1121a	1124a	1128a	1137a	1142a	1151a
1200p	1206p	1209p	1213p	1222p	1227p	1236p
1245p	1251p	1254p	1258p	107p	112p	121p
130p	136p	139p	143p	152p	157p	206p
215p	221p	224p	228p	237p	242p	251p
300p	306p	309p	313p	322p	327p	336p
345p	351p	354p	358p	407p	412p	421p
430p	436p	439p	443p	452p	457p	506p
515p	521p	524p	528p	537p	542p	551p
600p	606p	608p	612p	620p	625p	633p
645p	651p	653p	657p	705p	710p	718p
730p	736p	738p	742p

Westbound

7	6	5	4	3	2	1
Altamont Ave & Price Chopper	Main Ave & Crane St	Albany Street & Hulett Street	State St & Washington Ave (YMCA)	Mohawk Ave & Sacandaga Rd	5th Street & Vley Road	Walmart Glenville

SUNDAY

1030a	1041a	1046a	1055a	1059a	1102a	1108a
1115a	1126a	1131a	1140a	1144a	1147a	1153a
1200p	1211p	1216p	1225p	1229p	1232p	1238p
1245p	1256p	101p	110p	114p	117p	123p
130p	141p	146p	155p	159p	202p	208p
215p	226p	231p	240p	244p	247p	253p
300p	311p	316p	325p	329p	332p	338p
345p	356p	401p	410p	414p	417p	423p
430p	441p	446p	455p	459p	502p	508p
515p	526p	531p	540p	544p	547p	553p
600p	610p	614p	621p	625p	628p	634p
645p	655p	659p	706p	710p	713p	719p
730p	740p	744p	751p

From Ballston Spa to West Saratoga

1 2 3 5 6 7 8 9

152 W High St. - Social Services	Rt 50 & Malta Ave	Rowland St & Geyser Rd	Ballston Ave & Price Chopper	Worth St & Jefferson St	Lake Ave & Broadway	Saratoga Train Station	Kirby Rd at Kirby Village
----------------------------------	-------------------	------------------------	------------------------------	-------------------------	---------------------	------------------------	---------------------------

Sunday & Major Holidays

910a	914a	923a	932a	935a	944a	951a	958a
1110a	1114a	1123a	1132a	1135a	1144a	1151a	1158a
110p	114p	123p	132p	135p	144p	151p	158p
310p	314p	323p	332p	335p	344p	351p	358p

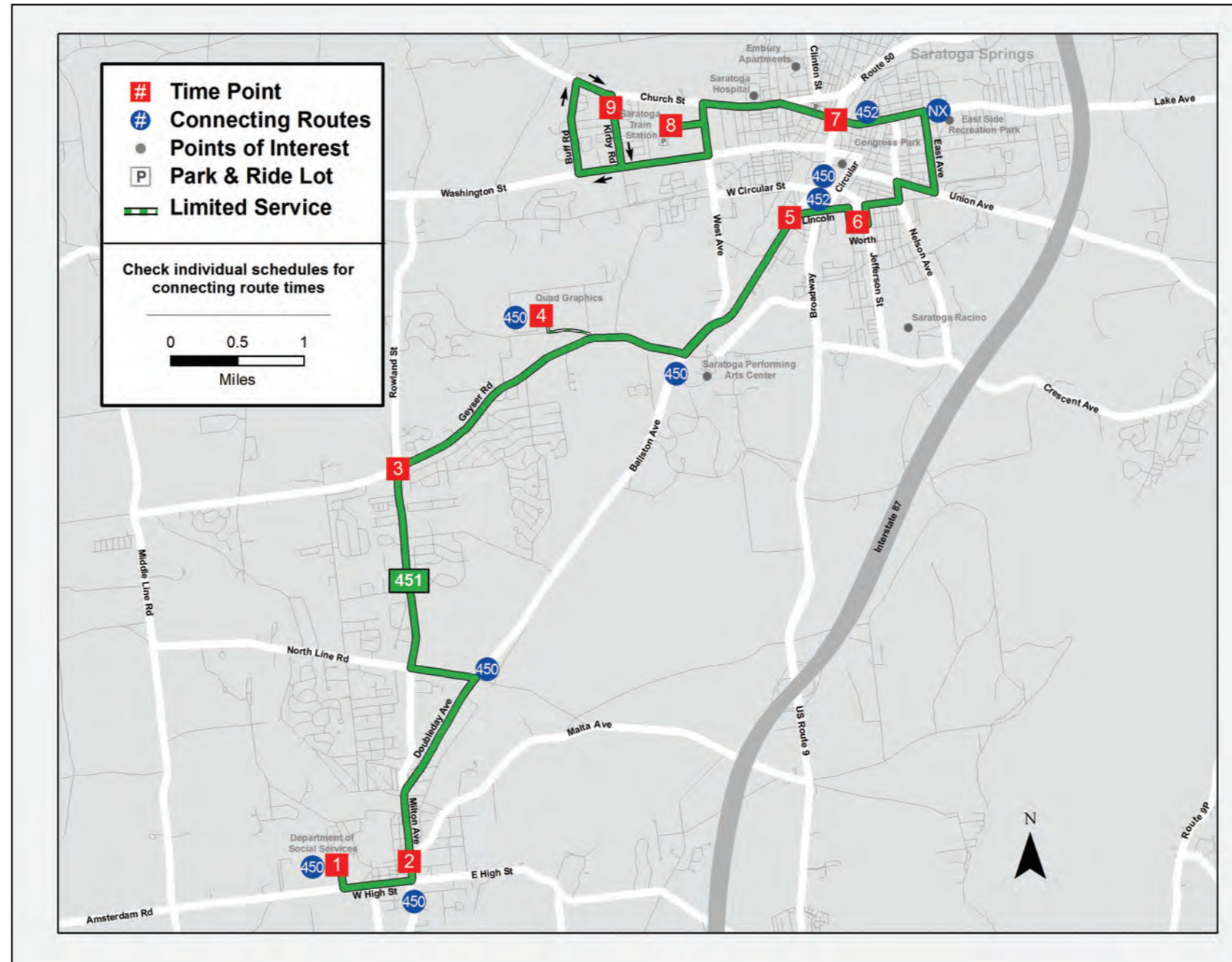
From West Saratoga to Ballston Spa

9 8 7 6 5 3 2 1

Kirby Rd at Kirby Village	Saratoga Train Station	Church St & Broadway	Worth St & Vanderbilt Ave	Ballston Ave & Price Chopper	Geyser Rd & Rowland St	Rt 50 & Washington St	152 W High St. - Social Services
---------------------------	------------------------	----------------------	---------------------------	------------------------------	------------------------	-----------------------	----------------------------------

Sunday & Major Holidays

1010a	1015a	1022a	1031a	1034a	1043a	1052a	1055a
1210p	1215p	1222p	1231p	1234p	1243p	1252p	1255p
210p	215p	222p	231p	234p	243p	252p	255p
410p	415p	422p	431p	434p	443p	452p	455p



Ballston Spa/ West Saratoga via East Ave & Lake Ave

between Ballston Spa, Saratoga,
Wilton via Route 50

EFFECTIVE MAY 27, 2018

Schedule



From Ballston Spa to West Saratoga

	1	2	3	4	5	6	7	8	9
	152 W High St. - Social Services	Rt 50 & Malta Ave	Rowland St & Geyser Rd	Quad Graphics	Ballston Ave & Price Chopper	Worth St & Jefferson St	Lake Ave & Broadway	Saratoga Train Station	Kirby Rd at Kirby Village

MONDAY - FRIDAY

610a	614a	623a	629a	636a	639a	648a	655a	702a
710a	714a	723a	729a	736a	739a	748a	755a	802a
810a	814a	823a	832a	835a	844a	851a	858a
910a	914a	923a	932a	935a	944a	951a	958a
1110a	1114a	1123a	1132a	1135a	1144a	1151a	1158a
110p	114p	123p	132p	135p	144p	151p	158p
310p	314p	323p	332p	335p	344p	351p	358p
410p	414p	423p	432p	435p	444p	451p	458p
510p	514p	523p	532p	535p	544p	551p	558p
610p	614p	623p	629p	636p	639p	648p	655p	702p
710p	714p	723p	729p	736p	739p	748p	755p	802p

From West Saratoga to Ballston Spa

	9	8	7	6	5	4	3	2	1
	Kirby Rd at Kirby Village	Saratoga Train Station	Church St & Broadway	Worth St & Vanderbilt Ave	Ballston Ave & Price Chopper	Quad Graphics	Geyser Rd & Rowland St	Rt 50 & Washington St	152 W High St. - Social Services

MONDAY - FRIDAY

710a	715a	722a	731a	734a	740a	747a	756a	759a
810a	815a	822a	831a	834a	843a	852a	855a
910a	915a	922a	931a	934a	943a	952a	955a
1010a	1015a	1022a	1031a	1034a	1043a	1052a	1055a
1210p	1215p	1222p	1231p	1234p	1243p	1252p	1255p
210p	215p	222p	231p	234p	243p	252p	255p
410p	415p	422p	431p	434p	443p	452p	455p
510p	515p	522p	531p	534p	543p	552p	555p
610p	615p	622p	631p	634p	640p	647p	656p	659p
710p	715p	722p	731p	734p	740p	747p	756p	759p

From Ballston Spa to West Saratoga

	1	2	3	4	5	6	7	8	9
	152 W High St. - Social Services	Rt 50 & Malta Ave	Rowland St & Geyser Rd	Quad Graphics	Ballston Ave & Price Chopper	Worth St & Jefferson St	Lake Ave & Broadway	Saratoga Train Station	Kirby Rd at Kirby Village

SATURDAY

610a	614a	623a	629a	636a	639a	648a	655a	702a
810a	814a	823a	832a	835a	844a	851a	858a
1010a	1014a	1023a	1032a	1035a	1044a	1051a	1058a
1210p	1214p	1223p	1232p	1235p	1244p	1251p	1258p
210p	214p	223p	232p	235p	244p	251p	258p
410p	414p	423p	432p	435p	444p	451p	458p
610p	614p	623p	629p	636p	639p	648p	655p	702p

From West Saratoga to Ballston Spa

	9	8	7	6	5	4	3	2	1
	Kirby Rd at Kirby Village	Saratoga Train Station	Church St & Broadway	Worth St & Vanderbilt Ave	Ballston Ave & Price Chopper	Quad Graphics	Geyser Rd & Rowland St	Rt 50 & Washington St	152 W High St. - Social Services

SATURDAY

710a	715a	722a	731a	734a	740a	747a	756a	759a
910a	915a	922a	931a	934a	943a	952a	955a
1110a	1115a	1122a	1131a	1134a	1143a	1152a	1155a
110p	115p	122p	131p	134p	143p	152p	155p
310p	315p	322p	331p	334p	343p	352p	355p
510p	515p	522p	531p	534p	543p	552p	555p
710p	715p	722p	731p	734p	740p	747p	756p	759p

FARE INFORMATION

Fares (US coins and \$1, \$5 – dollar bills are accepted; fareboxes do not make change)

Cash Fares:

Base Fare -	\$1.50
Base Half Fare -	\$0.75
BusPlus Fare -	\$2.00
BusPlus Half Fare -	\$1.00

Navigator Smart Card and Mobile App Fares:

Pay As You Go Fare - \$1.30 for each of the first three rides, while the fourth and up are free for the rest of the day.

Pay As You Go Half Fare - \$0.65 for each of the first three rides, while the fourth and up are free for the rest of the day.

Frequent Rider - \$65 for unlimited rides for 31 consecutive days from the first day of use.

Frequent Rider Half Fare - \$32.50 for unlimited rides for 31 consecutive days from the first day of use.

Children 46" and under ride free when accompanied by a fare paying adult.

Citizens age 65 and over, disabled individuals, Medicare card holder, and veterans are entitled to ride for half fare on CDTA's fixed route service. A valid Half Fare Navigator card is required when paying half fare on the bus.

CDTA's policy is to be fully compliant with Title VI of the 1964 Civil Right Act, which states that no one shall be excluded from participation in, denied the benefits of or discriminated against due to race, color, or national origin. Members of public may request information on this policy or file a Title VI complaint thru CDTA's website @ www.cdta.org or by calling (518)482-8822.

Skidmore College to Wilton Mall

1 2 3 4 6 7 8

Skidmore College Case Center	Embury Apts	Broadway & Church Ave	Spring St & Henry St	Excelsior Ave & East Ave	Walmart - Wilton	Wilton Mall Bon-Ton
------------------------------	-------------	-----------------------	----------------------	--------------------------	------------------	---------------------

Sunday & Major Holidays

819a	826a	828a	832a	840a	843a
904a	907a	913a	916a	920a	929a	933a
949a	956a	959a	1003a	1012a	1016a
1034a	1037a	1043a	1046a	1050a	1059a	1103a
1119a	1126a	1129a	1133a	1142a	1146a
1204p	1207p	1213p	1216p	1220p	1229p	1233p
1249p	1256p	1259p	103p	112p	116p
134p	137p	143p	146p	150p	159p	203p
219p	226p	229p	233p	242p	246p
304p	307p	313p	316p	320p	329p	333p
349p	356p	359p	403p	412p	416p
434p	437p	443p	446p	450p	459p	503p
519p	526p	529p	533p	542p	546p

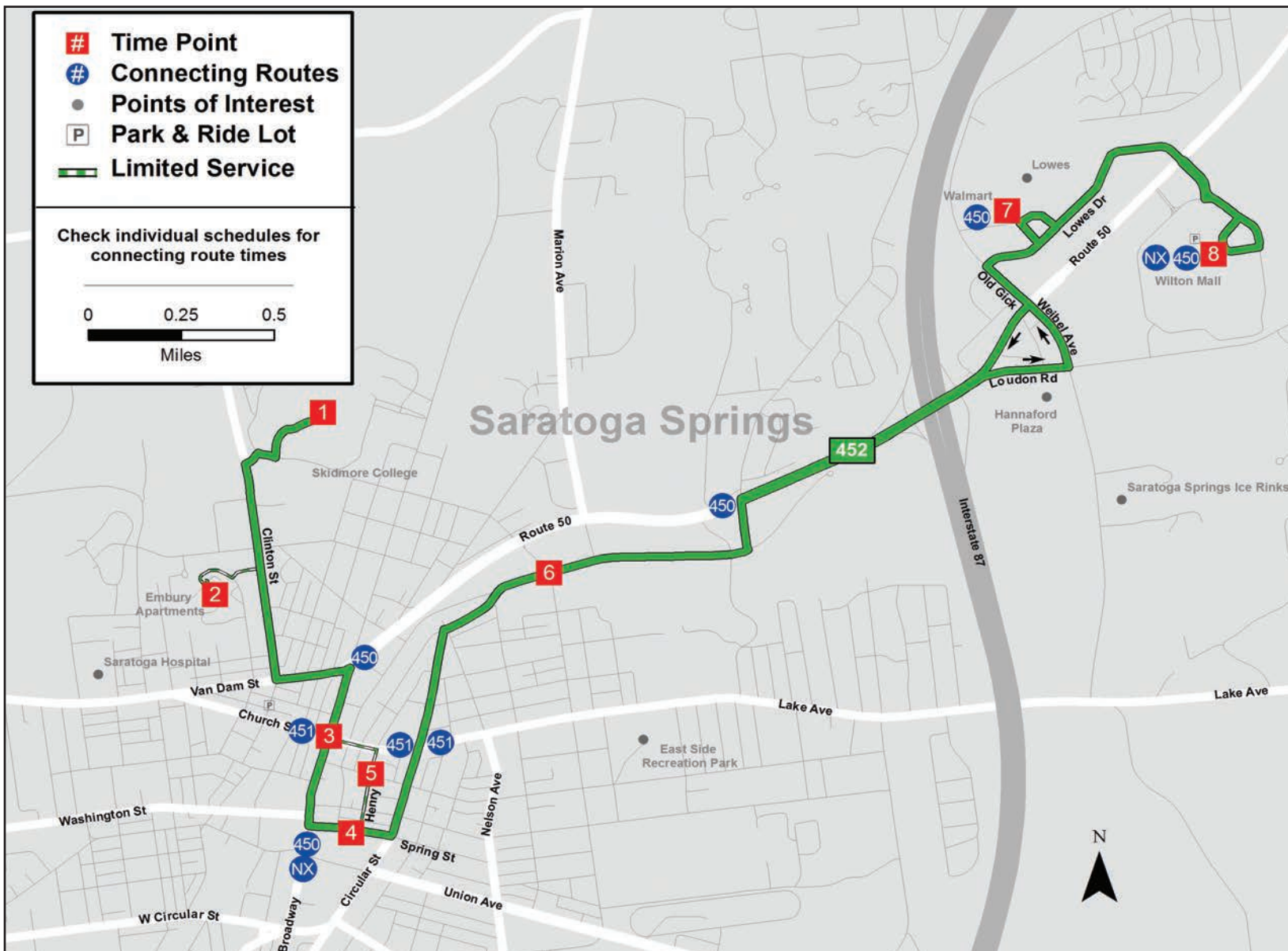
Wilton Mall to Skidmore College

8 7 6 4 3 2 1

Wilton Mall Bon-Ton	Walmart - Wilton	Excelsior Ave & East Ave	Spring St & Putnam St	Broadway & Lake Ave	Embury Apts	Skidmore College Case Center
---------------------	------------------	--------------------------	-----------------------	---------------------	-------------	------------------------------

Sunday & Major Holidays

900a	903a	911a	915a	919a	925a
945a	948a	956a	1000a	1004a	1010a
1030a	1033a	1041a	1045a	1049a	1054a	1057a
1115a	1118a	1126a	1130a	1134a	1140a
1200p	1203p	1211p	1215p	1219p	1224p	1227p
1245p	1248p	1256p	100p	104p	110p
130p	133p	141p	145p	149p	154p	157p
215p	218p	226p	230p	234p	240p
300p	303p	311p	315p	319p	324p	327p
345p	348p	356p	400p	404p	410p
430p	433p	441p	445p	449p	454p	457p
515p	518p	526p	530p	534p	540p
600p	603p	610p	614p	617p	621p	624p



FARE INFORMATION

Fares (US coins and \$1, \$5 – dollar bills are accepted; fareboxes do not make change)

Cash Fares:

Base Fare	\$1.50
Base Half Fare	\$0.75
BusPlus Fare	\$2.00
BusPlus Half Fare	\$1.00

Navigator Smart Card and Mobile App Fares:

Pay As You Go Fare - \$1.30 for each of the first three rides, while the fourth and up are free for the rest of the day.

Pay As You Go Half Fare - \$0.65 for each of the first three rides, while the fourth and up are free for the rest of the day.

Frequent Rider - \$65 for unlimited rides for 31 consecutive days from the first day of use.

Frequent Rider Half Fare - \$32.50 for unlimited rides for 31 consecutive days from the first day of use.

Children 46" and under ride free when accompanied by a fare paying adult.

Citizens age 65 and over, disabled individuals, Medicare card holder, and veterans are entitled to ride for half fare on CDTA's fixed route service. A valid Half Fare *Navigator* card is required when paying half fare on the bus.

CDTA's policy is to be fully compliant with Title VI of the 1964 Civil Right Act, which states that no one shall be excluded from participation in, denied the benefits of or discriminated against due to race, color, or national origin. Members of public may request information on this policy or file a Title VI complaint thru CDTA's website @ www.cdta.org or by calling 518-482-8822.



Skidmore College/ Wilton Mall via Downtown Saratoga Wilton via Rt. 50

between Skidmore College, Downtown Saratoga, Wilton via Route 50

Schedule

EFFECTIVE MAY 27, 2018



Skidmore College to Wilton Mall

Wilton Mall to Skidmore College

Skidmore College to Wilton Mall

Wilton Mall to Skidmore College

1 2 3 4 6 7 8 5 3 1

8 7 6 4 3 2 1

1 2 3 4 6 7 8 5 3 1

8 7 6 4 3 2 1

Skidmore College Case Center Embury Apts Broadway & Church Ave Spring St & Henry St Excelsior Ave & East Ave Walmart - Wilton Wilton Mall Bon-Ton Henry St & Caroline St Broadway & Church Ave Skidmore College Case Center

Wilton Mall Bon-Ton Walmart - Wilton Excelsior Ave & East Ave Spring St & Putnam St Broadway & Lake Ave Embury Apts Skidmore College Case Center

Skidmore College Case Center Embury Apts Broadway & Church Ave Spring St & Henry St Excelsior Ave & East Ave Walmart - Wilton Wilton Mall Bon-Ton Henry St & Caroline St Broadway & Church Ave Skidmore College Case Center

Wilton Mall Bon-Ton Walmart - Wilton Excelsior Ave & East Ave Spring St & Putnam St Broadway & Lake Ave Embury Apts Skidmore College Case Center

MONDAY - FRIDAY

MONDAY - FRIDAY

SATURDAY

SATURDAY

Table with 10 columns (stops) and 20 rows of departure times for Monday-Friday Skidmore to Wilton Mall.

Table with 7 columns (stops) and 20 rows of departure times for Monday-Friday Wilton Mall to Skidmore College.

Table with 10 columns (stops) and 20 rows of departure times for Saturday Skidmore to Wilton Mall.

Table with 7 columns (stops) and 20 rows of departure times for Saturday Wilton Mall to Skidmore College.

(These trips ONLY run when Skidmore College is in session) MONDAY - FRIDAY

Table with 10 columns (stops) and 5 rows of departure times for Monday-Friday Skidmore to Wilton Mall (college in session).

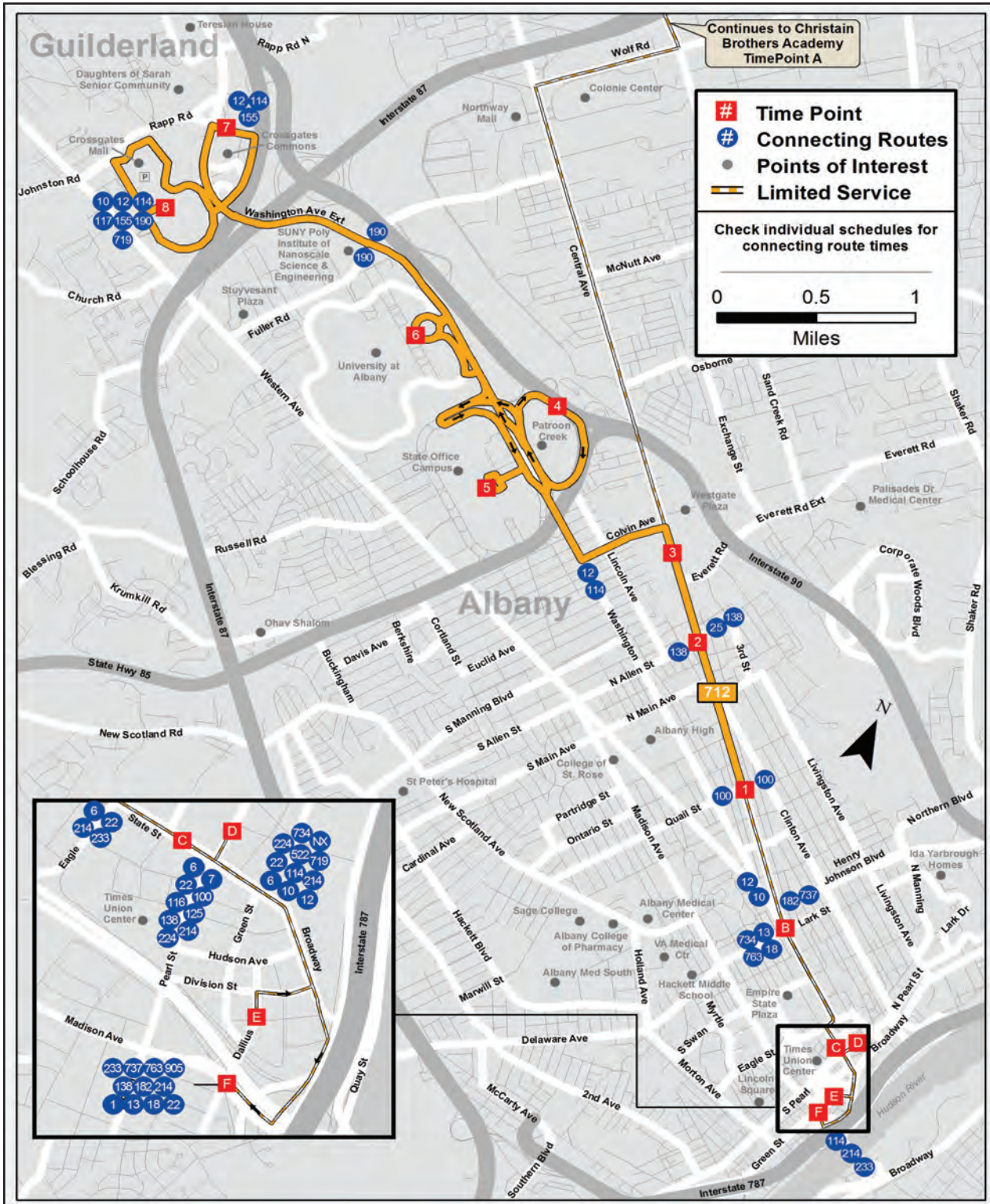
(These trips do not run when Skidmore College is not in session)

Table with 10 columns (stops) and 10 rows of departure times for Saturday Skidmore to Wilton Mall (college not in session).

(These trips ONLY run when Skidmore College is in session) THURSDAY - FRIDAY

Table with 10 columns (stops) and 8 rows of departure times for Thursday-Friday Skidmore to Wilton Mall (college in session).

The timetable shows WHEN the bus stops. Times are approximate and depend upon traffic and weather conditions. Arrive at the bus stop 2-3 minutes early to avoid missing the bus.



712

irideTM

Harriman Campus / Patroon Creek

between Crossgates Mall, UAlbany, Harriman Campus, Downtown Albany via Central Avenue

EFFECTIVE MAY 27, 2018

Schedule



Central Ave / Quail Station to Crossgates

D	B	1	2	3	4	5	6	7	8	A
Ten Eyck Plaza	Lark Station	Quail Station	Central & N. Allen Station	West Mall Station	400 Patroon Creek Blvd	Harriman State Campus Building 8	UAlbany Collins Circle	Crossgates Commons	Crossgates Mid-Mall	Christian Brother's Academy

MONDAY – FRIDAY

.....	629a	633a	636a	643a	647a	652a	658a	705a
.....	659a	703a	706a	713a	717a	722a	728a	735a
S655a	S705a	S723a	S728a	S743a
.....	729a	733a	736a	743a	747a	752a	758a	805a
.....	744a	748a	751a	758a	802a	807a	813a	820a
.....	759a	803a	806a	813a	817a	822a	828a	835a
.....	829a	833a	836a	843a	847a	852a	858a	905a
.....	1019a	1023a	1026a	1033a	1037a	1042a	1048a	1055a
.....	1219p	1223p	1226p	1233p	1237p	1242p	1248p	1255p
.....	316p	320p	323p	330p	334p	340p	346p	353p
.....	351p	355p	358p	405p	409p	415p	421p	428p
.....	416p	420p	423p	430p	434p	440p	446p	453p

Crossgates to Central Ave / Quail Station

8	7	6	5	4	A	3	2	1	B	C	F
Crossgates Mid-Mall	Crossgates Commons	UAlbany Collins Circle	Harriman State Campus Building 8	400 Patroon Creek Blvd	Christian Brothers Academy	West Mall Station	Central & N. Allen Station	Quail Station	Lark Station	S. Pearl Station	Madison Ave & Green Street

MONDAY – FRIDAY

730a	734a	742a	749a	753a	800a	803a	807a
800a	804a	812a	819a	823a	830a	833a	837a
1100a	1104a	1112a	1119a	1123a	1130a	1133a	1137a
100p	104p	112p	119p	123p	130p	133p	137p
.....	S252p	S312p	S317p	S325p	S330p	S332p
300p	304p	312p	319p	323p	330p	333p	337p
340p	344p	352p	359p	403p	410p	413p	417p
400p	404p	412p	419p	423p	430p	433p	437p
415p	419p	427p	434p	438p	445p	448p	452p
430p	434p	442p	449p	453p	500p	503p	507p
500p	504p	512p	519p	523p	530p	533p	537p
530p	534p	542p	549p	553p	600p	603p	607p
600p	604p	612p	619p	623p	630p	633p	637p
630p	634p	642p	649p	653p	700p	703p	707p

FARE INFORMATION

Fares (US coins and \$1, \$5 – dollar bills are accepted; fareboxes do not make change)

Cash Fares:

Base Fare -	\$1.50
Base Half Fare -	\$0.75
BusPlus Fare -	\$2.00
BusPlus Half Fare -	\$1.00

Navigator Smart Card and Mobile App Fares:

Pay As You Go Fare - \$1.30 for each of the first three rides, while the fourth and up are free for the rest of the day.

Pay As You Go Half Fare - \$0.65 for each of the first three rides, while the fourth and up are free for the rest of the day.

Frequent Rider - \$65 for unlimited rides for 31 consecutive days from the first day of use.

Frequent Rider Half Fare - \$32.50 for unlimited rides for 31 consecutive days from the first day of use.

Children 46" and under ride free when accompanied by a fare paying adult.

Citizens age 65 and over, disabled individuals, Medicare card holder, and veterans are entitled to ride for half fare on CDTA's fixed route service. A valid Half Fare Navigator card is required when paying half fare on the bus.

CDTA's policy is to be fully compliant with Title VI of the 1964 Civil Right Act, which states that no one shall be excluded from participation in, denied the benefits of or discriminated against due to race, color, or national origin. Members of public may request information on this policy or file a Title VI complaint thru CDTA's website @ www.cdta.org or by calling 518-482-8822.

S- Trip operates when school is in session.

Service is also available to/from the following schools, when school is in session: Christian Brothers Academy. This service is open to and accessible to the general public.

719

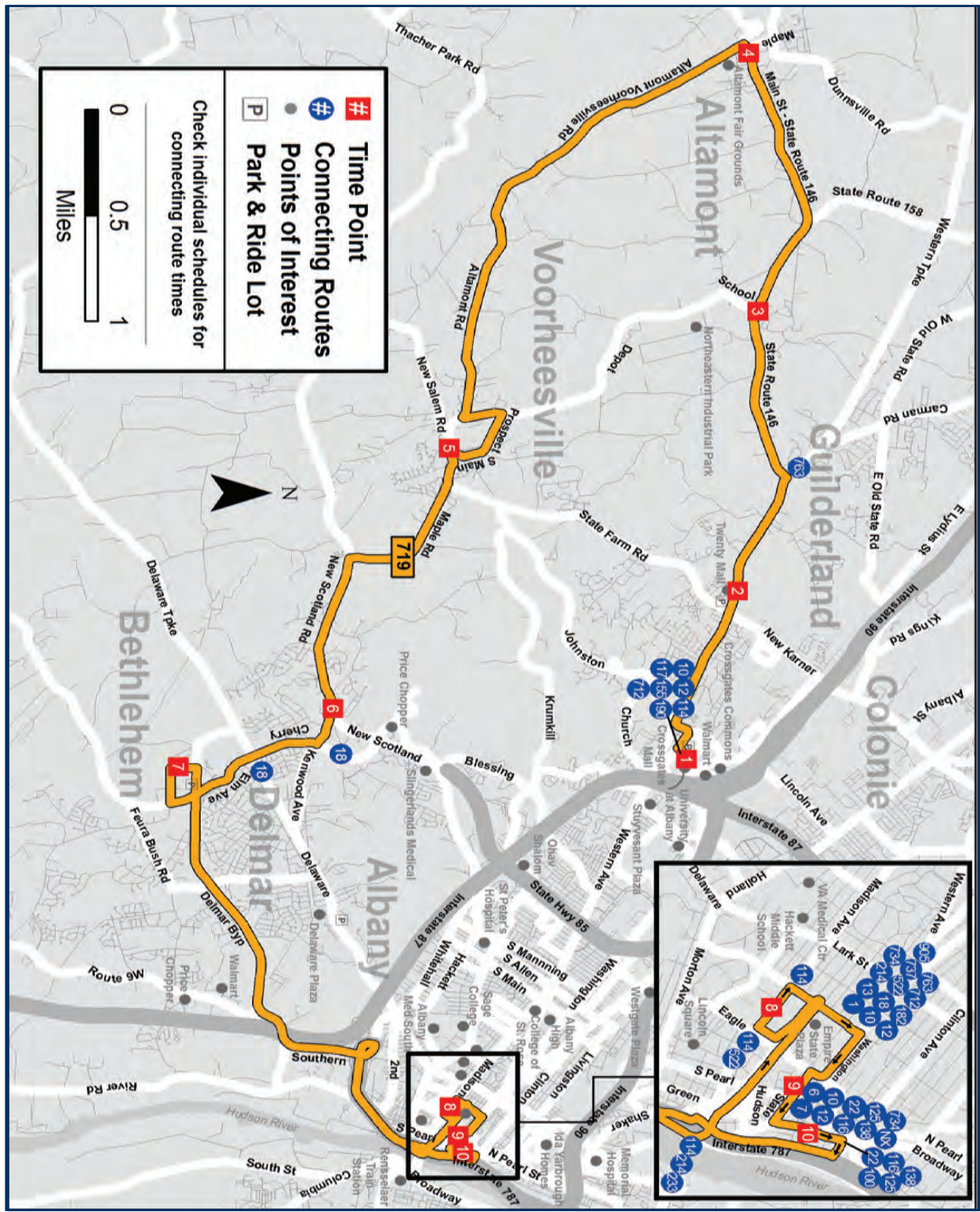


Altamont/ Voorheesville

between Crossgates Mall, Delmar, and
Downtown Albany

EFFECTIVE MAY 27, 2018

Schedule



www.cdta.org

518-482-8822

Altamont/Voorheesville to Albany

1	2	3	4	5	6	7	8	9	10
----------	----------	----------	----------	----------	----------	----------	----------	----------	-----------

Crossgates Mid Mall	Hamilton Square (20 Mall)	Route 146 & Guilderland Center	Main St & Park Ave	66 Maple Ave	1568 New Scotland Rd	Elm Ave Park & Ride Lot	Madison Ave - ESP	South Pearl Station	Kiernan Plaza
---------------------	---------------------------	--------------------------------	--------------------	--------------	----------------------	-------------------------	-------------------	---------------------	---------------

MONDAY – FRIDAY

554a	604a	614a	622a	638a	648a	656a	710a	717a	719a
624a	634a	644a	652a	708a	718a	726a	740a	747a	749a
654a	704a	714a	722a	738a	748a	756a	810a	817a	819a
.....	826a	840a	847a	849a

Albany to Altamont/Voorheesville

8	9	10	7	6	5	4	3	2	1
----------	----------	-----------	----------	----------	----------	----------	----------	----------	----------

Madison Ave - ESP	South Pearl Station	Kiernan Plaza	Elm Ave Park & Ride Lot	Kenwood & New Scotland	Maple Ave & Voorheesville Ave	Main St & Maple Ave	Route 146 & Guilderland Apts	Hamilton Square (20 Mall)	Crossgates Mid Mall
-------------------	---------------------	---------------	-------------------------	------------------------	-------------------------------	---------------------	------------------------------	---------------------------	---------------------

MONDAY – FRIDAY

410p	419p	421p	438p	446p	455p	511p	518p	527p	536p
440p	449p	451p	508p	516p	525p	541p	548p	557p	606p
510p	519p	521p	538p	546p	555p	611p	618p	627p	636p
540p	549p	551p	608p

FARE INFORMATION

Fares (US coins and \$1, \$5 – dollar bills are accepted; fareboxes do not make change)

Cash Fares:

Base Fare	\$1.50
Base Half Fare	\$0.75
BusPlus Fare	\$2.00
BusPlus Half Fare	\$1.00

Navigator Smart Card and Mobile App Fares:

Pay As You Go Fare - \$1.30 for each of the first three rides, while the fourth and up are free for the rest of the day.

Pay As You Go Half Fare - \$0.65 for each of the first three rides, while the fourth and up are free for the rest of the day.

Frequent Rider - \$65 for unlimited rides for 31 consecutive days from the first day of use.

Frequent Rider Half Fare - \$32.50 for unlimited rides for 31 consecutive days from the first day of use.

Children 46” and under ride free when accompanied by a fare paying adult.

Citizens age 65 and over, disabled individuals, Medicare card holder, and veterans are entitled to ride for half fare on CDTA’s fixed route service. A valid Half Fare *Navigator* card is required when paying half fare on the bus.

CDTA’s policy is to be fully compliant with Title VI of the 1964 Civil Right Act, which states that no one shall be excluded from participation in, denied the benefits of or discriminated against due to race, color, or national origin. Members of public may request information on this policy or file a Title VI complaint thru CDTA’s website @ www.cdta.org or by calling 518-482-8822.