

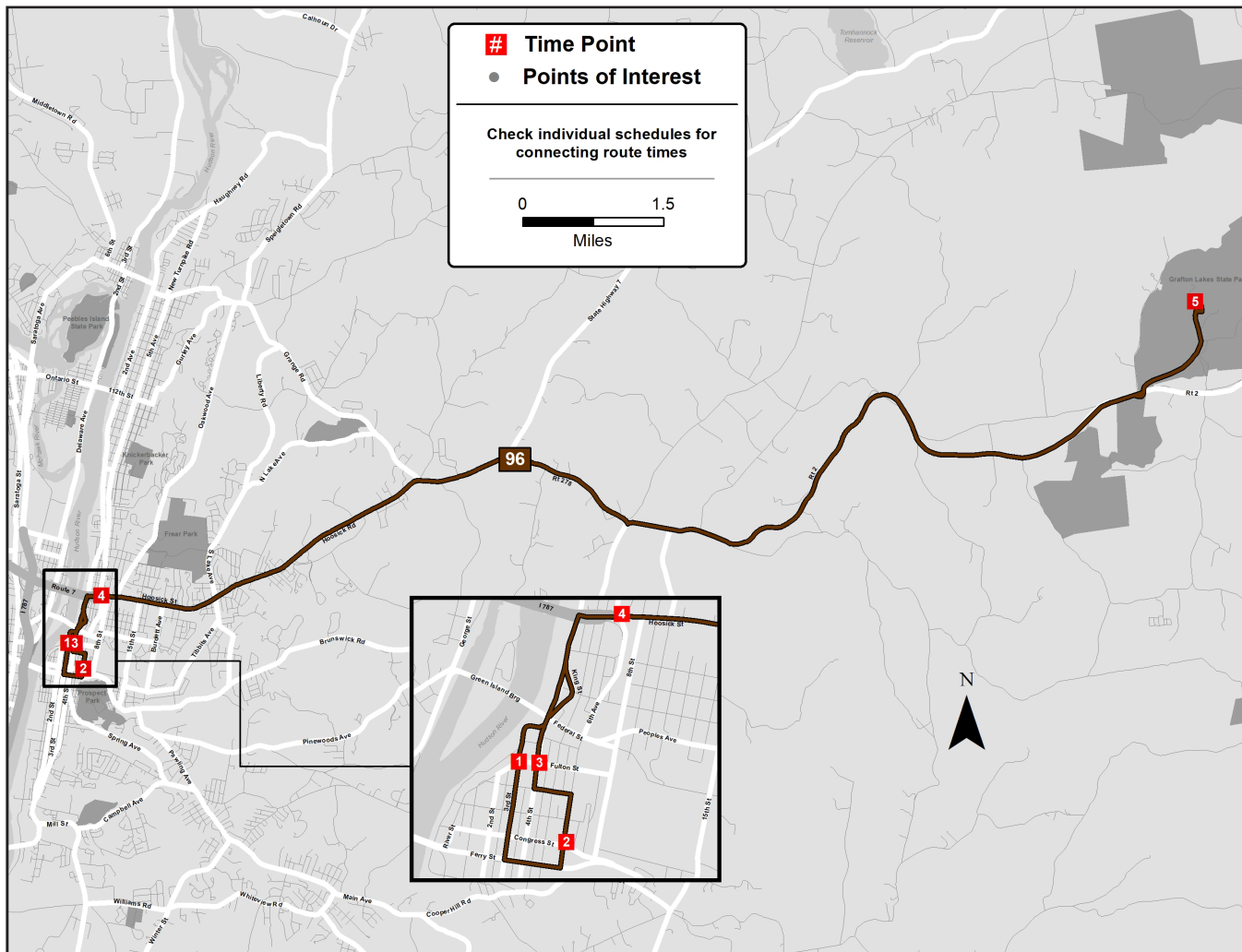
Grafton Lakes State Park

Via Hoosick St (Route 7)

Operates Wednesday to Sunday each week, including holidays.

EFFECTIVE JULY 3, 2021

Schedule



Weekday Downtown Troy to Grafton State Park

1	2	3	4	5
River St & Front St	Troy Boys & Girls Club	4th St & Fulton St	Hoosick St & 6th Ave	Grafton Lake State Park

Wednesday – Friday

1030a	1035a	1038a	1043a	1107a
225p	230p	233p	238p	302p
600p	605p	608p	613p	637p

Weekday Grafton State Park to Downtown Troy

5	4	1	2
Grafton Lake State Park	Hoosick St & 6th Ave	River St & Front St	Troy Boys & Girls Club

Wednesday – Friday

1108a	1134a	1138a	1143a
308p	334p	338p	343p
640p	706p	710p	715p

Weekend Downtown Troy to Grafton State Park

1	3	4	5
River St & Front St	4th St & Fulton St	Hoosick St & 6th Ave	Grafton Lake State Park

Saturday – Sunday

1030a	1035a	1040a	1104a
225p	230p	235p	259p
600p	605p	610p	634p

Weekend Grafton State Park to Troy

5	4	1
Grafton Lake State Park	Hoosick St & 6th Ave	River St & Front St

Saturday – Sunday

1105a	1131a	1135a
305p	331p	335p
640p	706p	710p

FARE INFORMATION

Fares (US coins and \$1, \$5 – dollar bills are accepted; fareboxes do not make change)

Base Fare -	\$1.50
Base Half Fare -	\$0.75
BusPlus Fare -	\$2.00
BusPlus Half Fare -	\$1.00

Navigator Smart Card and Mobile App Fares:

Pay As You Go Fare - \$1.30 for each of the first three rides, while the fourth and up are free for the rest of the day.

Pay As You Go Half Fare - \$0.65 for each of the first three rides, while the fourth and up are free for the rest of the day.

Frequent Rider - \$65 for unlimited rides for 31 consecutive days from the first day of use.

Frequent Rider Half Fare - \$32.50 for unlimited rides for 31 consecutive days from the first day of use.

Citizens age 65 and over, disabled individuals, Medicare card holder, and veterans are entitled to ride for half fare on CDTA's fixed route service. A valid Half Fare Navigator card is required when paying half fare on the bus.

Children 46" and under ride free when accompanied by a fare paying adult.

CDTA's policy is to be fully compliant with Title VI of the 1964 Civil Right Act, which states that no one shall be excluded from participation in, denied the benefits of or discriminated against due to race, color, or national origin. Members of public may request information on this policy or file a Title VI complaint thru CDTA's website @ www.cdta.org or by calling (518) 482-8822.

Grafton Lakes State Park, on the forested plateau between the Taconic and Hudson Valleys, includes six ponds and nearly 2500 acres. Long Pond has a large, sandy beach, which is a popular summer attraction. Anglers can go after rainbow and brown trout in Long, Second and Shaver Pond. Pickerel, perch, and bass are abundant in all ponds including Mill Pond and walleye are found at the Martin-Durham Reservoir. All ponds have launch facilities for canoes, sailboats and rowboats, electric boat are allowed. Visitors also picnic, walk the nature trails, and hike, bike or ride horses along the 25 miles of park trails.