

520

iride™

Albany / Nassau Express

between Downtown Albany, Nassau
via Schodack Park and Ride and I-90

EFFECTIVE SEPT 10, 2018

Schedule



CDTA

www.cdta.org

518-482-8822

From Albany to Schodack

4 5 1 2 3

Empire State Plaza Concourse	Hudson & Broadway	Schodack Park & Ride	Route 7 & Route 150	Malden & Chatham
------------------------------	-------------------	----------------------	---------------------	------------------

MONDAY – FRIDAY

.....	604a	607a	616a
.....	704a	707a	716a
.....	804a	807a	816a
417p	427p	443p	446p	456p
517p	527p	543p	546p	556p

From Schodack to Albany

3 2 1 4 5

Malden & Chatham	Route 7 & Route 150	Schodack Park & Ride	Empire State Plaza Concourse	Hudson & Broadway
------------------	---------------------	----------------------	------------------------------	-------------------

MONDAY – FRIDAY

620a	628a	631a	648a	658a
721a	729a	732a	749a	759a
821a	829a	832a	849a	859a
500p	508p	512p
600p	608p	612p

INSTRUCTIONS

The timetable shows WHEN the bus stops.

Times are approximate and depend upon traffic and weather conditions. Arrive at the bus stop 2-3 minutes early to avoid missing the bus.

FARE INFORMATION

Fares (US coins and \$1, \$5 – dollar bills are accepted; fareboxes do not make change)

Cash Fares:

Base Fare -\$1.50

Base Half Fare -\$0.75

BusPlus Fare -\$2.00

BusPlus Half Fare -\$1.00

Navigator Smart Card and Mobile App Fares:

Pay As You Go Fare - \$1.30 for each of the first three rides, while the fourth and up are free for the rest of the day.

Pay As You Go Half Fare - \$0.65 for each of the first three rides, while the fourth and up are free for the rest of the day.

Frequent Rider - \$65 for unlimited rides for 31 consecutive days from the first day of use.

Frequent Rider Half Fare - \$32.50 for unlimited rides for 31 consecutive days from the first day of use.

Children 46" and under ride free when accompanied by a fare paying adult.

Citizens age 65 and over, disabled individuals, Medicare card holder, and veterans are entitled to ride for half fare on CDTA's fixed route service. A valid Half Fare *Navigator* card is required when paying half fare on the bus.

CDTA's policy is to be fully compliant with Title VI of the 1964 Civil Right Act, which states that no one shall be excluded from participation in, denied the benefits of or discriminated against due to race, color, or national origin. Members of public may request information on this policy or file a Title VI complaint thru CDTA's website @ www.cdta.org or by calling 518-482-8822.

522

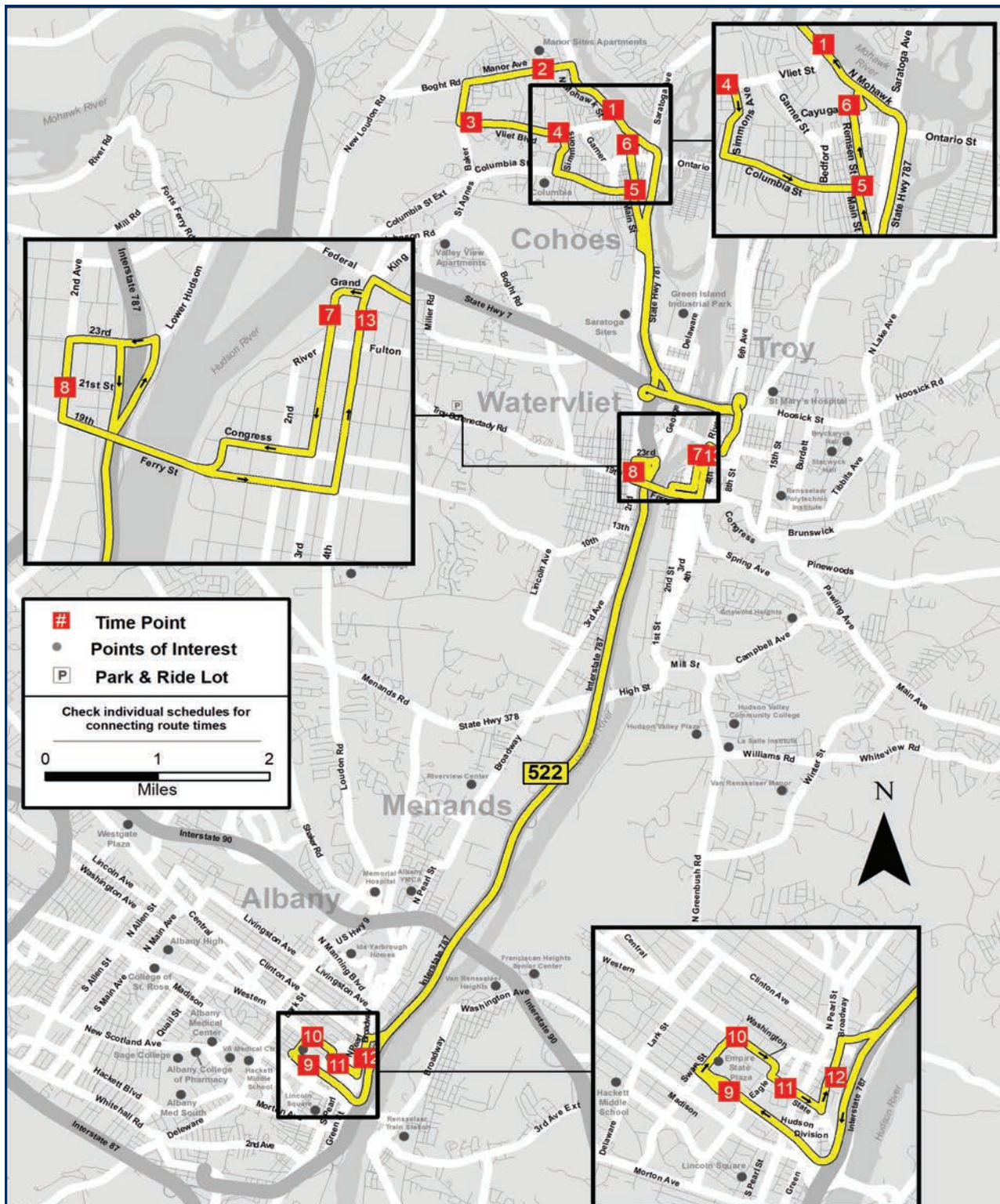
iride™

Hudson River Express

between Cohoes, Troy and Downtown Albany via I-787

EFFECTIVE SEPT 10, 2018

Schedule



CDTA

www.cdta.org

518-482-8822

Cohoes to Albany

1	2	3	4	5	6	7	8	9	10	11	12
N. Mohawk & Vliet	Manor Sites Apartments	Vliet Blvd & Willowbrook Lane	Vliet Blvd & Simmons Ave	Main Street & Columbia St	Remsen St & Cayuga St	River St & Front St	2nd Ave & 21st St	Empire State Plaza Concourse	S. Swan St & Washington Ave	South Pearl Station	Broadway & Kieman Plaza

MONDAY – FRIDAY

.....	617a	622a	634a	638a	642a	644a
.....	642a	647a	659a	703a	707a	709a
649a	652a	656a	658a	704a	708a	723a	729a	744a	748a	753a	755a
719a	722a	726a	728a	734a	738a	753a	759a	814a	818a	823a	825a
749a	752a	756a	758a	804a	808a	823a	829a	844a	848a	853a	855a

Albany to Cohoes

9	10	11	12	8	13	6	1	2	3	4	5	6
Empire State Plaza Concourse	S Swan St & Washington Ave	South Pearl Station	Broadway & Kieman Plaza	2nd Ave & 21st St	4th St & Fulton St	Remsen St & Cayuga St	N. Mohawk St & Vliet St	Manor Sites Apartments	Vliet Blvd & Willowbrook Ln	Vliet Blvd & Simmons Ave	Main St & Columbia St	Remsen St & Cayuga St

MONDAY – FRIDAY

344p	348p	354p	357p	409p	415p
414p	418p	424p	427p	439p	445p
444p	448p	454p	457p	509p	515p	524p	526p	528p	531p	534p	540p	542p
514p	518p	524p	527p	539p	545p	554p	556p	558p	601p	604p	610p	612p
544p	548p	554p	557p	609p	615p	624p	626p	628p	631p	634p	640p	642p

FARE INFORMATION

Fares (US coins and \$1, \$5 – dollar bills are accepted; fareboxes do not make change)

Cash Fares:

Base Fare - \$1.50

Base Half Fare - \$0.75

BusPlus Fare - \$2.00

BusPlus Half Fare - \$1.00

Navigator Smart Card and Mobile App Fares:

Pay As You Go Fare - \$1.30 for each of the first three rides, while the fourth and up are free for the rest of the day.

Pay As You Go Half Fare - \$0.65 for each of the first three rides, while the fourth and up are free for the rest of the day.

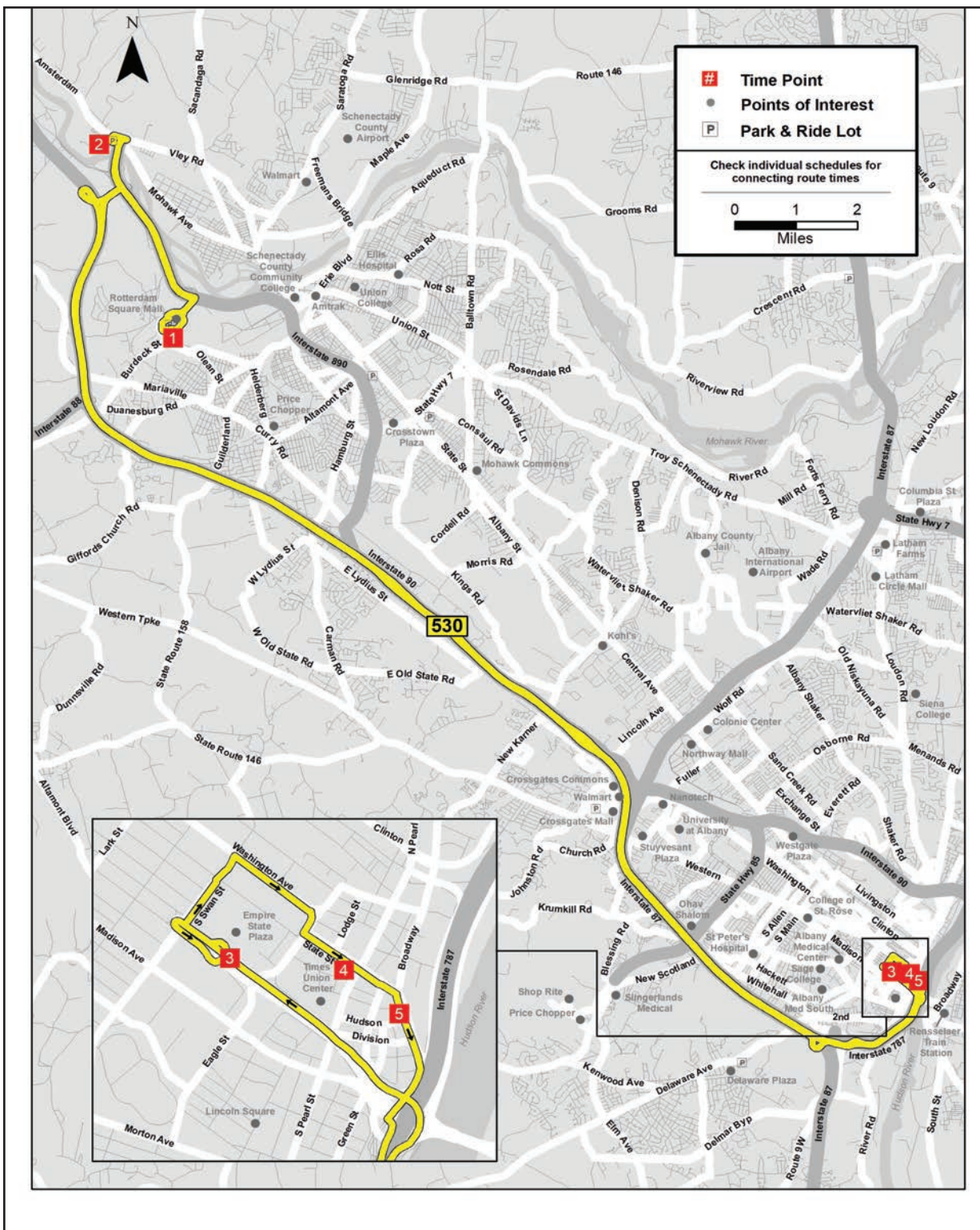
Frequent Rider - \$65 for unlimited rides for 31 consecutive days from the first day of use.

Frequent Rider Half Fare - \$32.50 for unlimited rides for 31 consecutive days from the first day of use.

Children 46” and under ride free when accompanied by a fare paying adult.

Citizens age 65 and over, disabled individuals, Medicare card holder, and veterans are entitled to ride for half fare on CDTA's fixed route service. A valid Half Fare Navigator card is required when paying half fare on the bus.

CDTA's policy is to be fully compliant with Title VI of the 1964 Civil Right Act, which states that no one shall be excluded from participation in, denied the benefits of or discriminated against due to race, color, or national origin. Members of public may request information on this policy or file a Title VI complaint thru CDTA's website @ www.cdta.org or by calling (518)482-8822.



530

iride™

VIA|Port Rotterdam Express

between VIA|Port Rotterdam
Exit 26 Park & Ride, and Downtown
Albany via Thruway

Schedule

EFFECTIVE SEPT 10, 2018



CDTA

www.cdta.org

518-482-8822

From Rotterdam to Albany

1	2	3	4	5
VIA Port Rotterdam	Exit 26 Park & Ride	Empire State Plaza Concourse	South Pearl Station	Broadway Station

MONDAY – FRIDAY

625a	637a	708a	714a	716a
650a	702a	733a	739a	741a
725a	737a	808a	814a	816a

From Albany to Rotterdam

3	4	5	2	1
Empire State Plaza Concourse	South Pearl Station	Broadway Station	Exit 26 Park & Ride	VIA Port Rotterdam

MONDAY – FRIDAY

347p	353p	355p	427p	436p
412p	418p	420p	452p	501p
447p	453p	455p	527p	536p
512p	518p	520p	552p	601p

INSTRUCTIONS

The timetable shows **WHEN** the bus stops.

Times are approximate and depend upon traffic and weather conditions. Arrive at the bus stop 2-3 minutes early to avoid missing the bus.

FARE INFORMATION

Fares (US coins and \$1, \$5 – dollar bills are accepted; fareboxes do not make change)

Cash Fares:

Base Fare -	\$1.50
Base Half Fare -	\$0.75
BusPlus Fare -	\$2.00
BusPlus Half Fare -	\$1.00

Navigator Smart Card and Mobile App Fares:

Pay As You Go Fare - \$1.30 for each of the first three rides, while the fourth and up are free for the rest of the day.

Pay As You Go Half Fare - \$0.65 for each of the first three rides, while the fourth and up are free for the rest of the day.

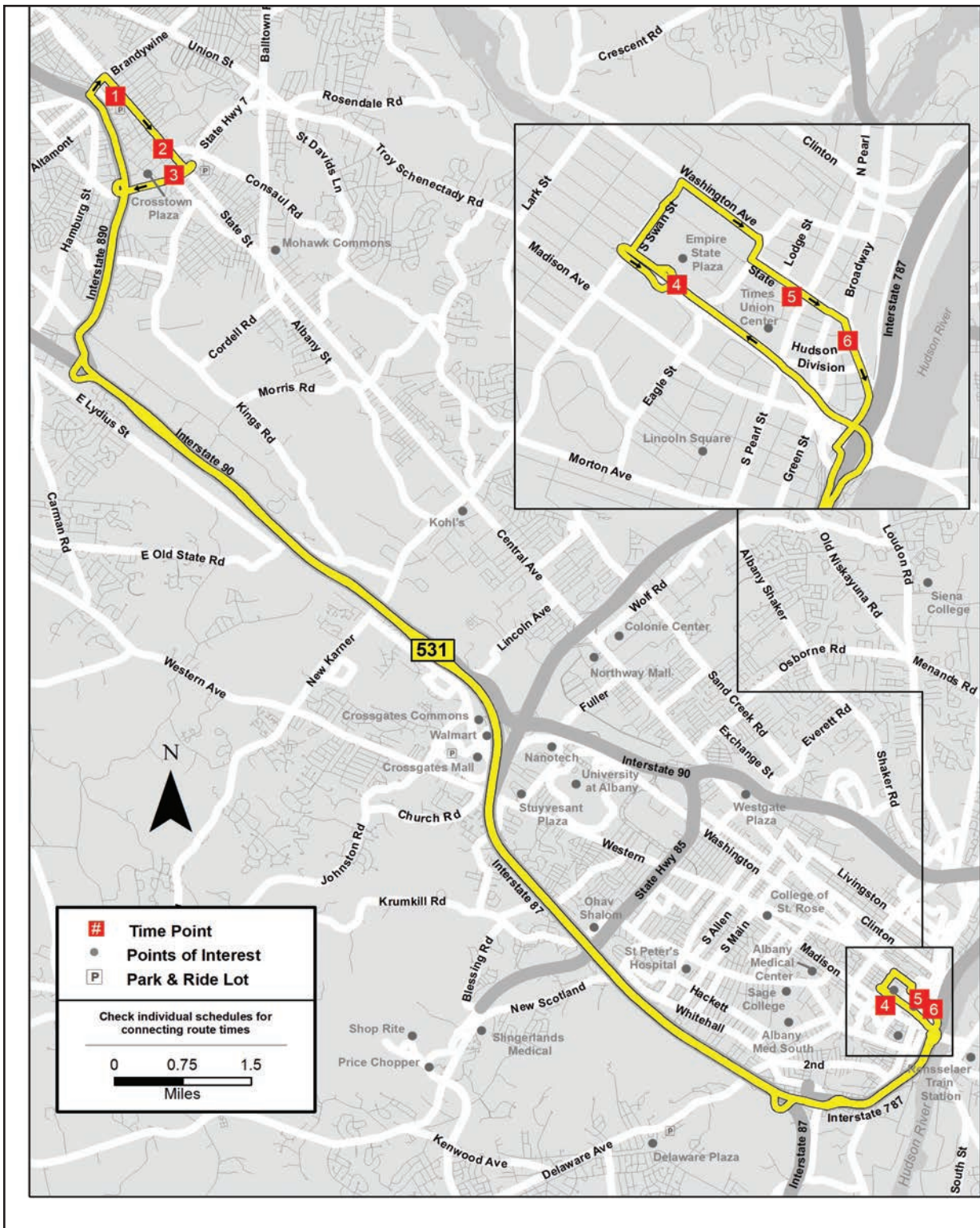
Frequent Rider - \$65 for unlimited rides for 31 consecutive days from the first day of use.

Frequent Rider Half Fare - \$32.50 for unlimited rides for 31 consecutive days from the first day of use.

Children 46" and under ride free when accompanied by a fare paying adult.

Citizens age 65 and over, disabled individuals, Medicare card holder, and veterans are entitled to ride for half fare on CDTA's fixed route service. A valid Half Fare *Navigator* card is required when paying half fare on the bus.

CDTA's policy is to be fully compliant with Title VI of the 1964 Civil Right Act, which states that no one shall be excluded from participation in, denied the benefits of or discriminated against due to race, color, or national origin. Members of public may request information on this policy or file a Title VI complaint thru CDTA's website @ www.cdta.org or by calling 518-482-8822.



From St. Luke's/Woodlawn Park & Rides to Albany

1	2	3	4	5	6
Division Station St. Luke's Park & Ride	Woodlawn Station Woodlawn Park & Ride	Route 7 & Albany Street	Empire State Plaza Concourse	South Pearl Station	Hudson & Broadway Albany

MONDAY – FRIDAY

610a	614a	616a	641a	648a	650a
640a	644a	646a	711a	718a	720a
712a	717a	719a	747a	755a	757a
740a	745a	747a	815a	823a	825a
812a	817a	819a	847a	855a	857a

From Albany to St. Luke's/Woodlawn Park & Rides

4	5	6	1	2	3
Empire State Plaza Concourse	South Pearl Station	Hudson & Broadway Albany	Division Station St. Luke's Park & Ride	Woodlawn Station Woodlawn Park & Ride	Route 7 & Albany Street

MONDAY – FRIDAY

317p	324p	326p	352p	357p	400p
347p	354p	356p	422p	427p	430p
419p	426p	428p	454p	459p	502p
447p	454p	456p	522p	527p	530p
519p	526p	528p	554p	559p	602p

INSTRUCTIONS

The timetable shows **WHEN** the bus stops.

Times are approximate and depend upon traffic and weather conditions. Arrive at the bus stop 2-3 minutes early to avoid missing the bus.

FARE INFORMATION

Fares (US coins and \$1, \$5 – dollar bills are accepted; fareboxes do not make change)

Cash Fares:

Base Fare -\$1.50

Base Half Fare -\$0.75

BusPlus Fare -\$2.00

BusPlus Half Fare -\$1.00

Navigator Smart Card and Mobile App Fares:

Pay As You Go Fare - \$1.30 for each of the first three rides, while the fourth and up are free for the rest of the day.

Pay As You Go Half Fare - \$0.65 for each of the first three rides, while the fourth and up are free for the rest of the day.

Frequent Rider - \$65 for unlimited rides for 31 consecutive days from the first day of use.

Frequent Rider Half Fare - \$32.50 for unlimited rides for 31 consecutive days from the first day of use.

Children 46" and under ride free when accompanied by a fare paying adult.

Citizens age 65 and over, disabled individuals, Medicare card holder, and veterans are entitled to ride for half fare on CDTA's fixed route service. A valid Half Fare *Navigator* card is required when paying half fare on the bus.

CDTA's policy is to be fully compliant with Title VI of the 1964 Civil Right Act, which states that no one shall be excluded from participation in, denied the benefits of or discriminated against due to race, color, or national origin. Members of public may request information on this policy or file a Title VI complaint thru CDTA's website @ www.cdta.org or by calling 518-482-8822.