

From Downtown to Wynantskill

9
6
7
8
6
5
4
3
2
1

Sunset & Forsyth	Sage & Anderson Field	River & Front	4th & Fulton St	Sage & 87 Gymnasium	15th & Congress	Myrtle Avenue	Pawling & Spring	Main & Atlantic	Vanderheyden Hall
------------------	-----------------------	---------------	-----------------	---------------------	-----------------	---------------	------------------	-----------------	-------------------

SATURDAY

.....	830a	835a	838a	840a	845a	846a	851a	855a
.....	930a	935a	938a	940a	945a	946a	951a	955a
.....	1030a	1035a	1038a	1040a	1045a	1046a	1051a	1055a
.....	1130a	1135a	1138a	1140a	1145a	1146a	1151a	1155a
.....	1230p	1235p	1238p	1240p	1245p	1246p	1251p	1255p
.....	130p	135p	138p	140p	145p	146p	151p	155p
.....	230p	235p	238p	240p	245p	246p	251p	255p
.....	330p	335p	338p	340p	345p	346p	351p	355p
.....	430p	435p	438p	440p	445p	446p	451p	455p
.....	530p	535p	538p	540p	545p	546p	551p	555p
.....	630p	635p	638p	640p	645p	646p	651p	655p
.....	730p	735p	738p	740p	745p	746p	751p	755p
.....	830p	835p	839p	841p	845p

(These trips do not run when RPI is not in session)

930p	934p	938p	943p	947p	949p	953p
1030p	1034p	1038p	1043p	1047p	1049p	1053p
1130p	1134p	1138p	1143p	1147p	1149p	1153p
1230a	1234a	1238a	1243a	1247a	1249a	1253a

FARE INFORMATION

Fares (US coins and \$1, \$5 – dollar bills are accepted; fareboxes do not make change)

Cash Fares:

Base Fare -	\$1.50
Base Half Fare -	\$0.75
BusPlus Fare -	\$2.00
BusPlus Half Fare -	\$1.00

Navigator Smart Card and Mobile App Fares:

Pay As You Go Fare - \$1.30 for each of the first three rides, while the fourth and up are free for the rest of the day.

Pay As You Go Half Fare - \$0.65 for each of the first three rides, while the fourth and up are free for the rest of the day.

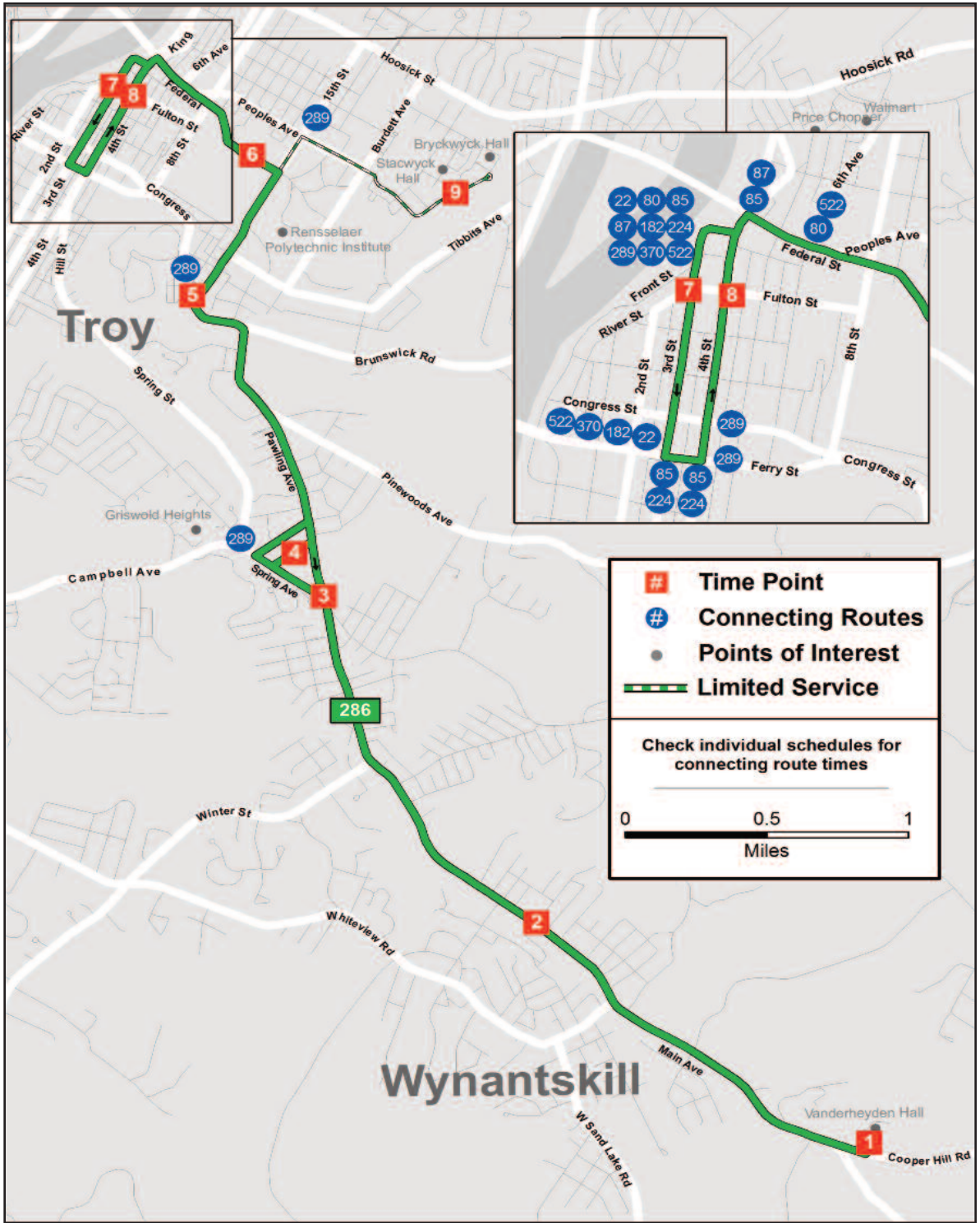
Frequent Rider - \$65 for unlimited rides for 31 consecutive days from the first day of use.

Frequent Rider Half Fare - \$32.50 for unlimited rides for 31 consecutive days from the first day of use.

Children 46" and under ride free when accompanied by a fare paying adult.

Citizens age 65 and over, disabled individuals, Medicare card holder, and veterans are entitled to ride for half fare on CDTA's fixed route service. A valid Half Fare *Navigator* card is required when paying half fare on the bus.

CDTA's policy is to be fully compliant with Title VI of the 1964 Civil Right Act, which states that no one shall be excluded from participation in, denied the benefits of or discriminated against due to race, color, or national origin. Members of public may request information on this policy or file a Title VI complaint thru CDTA's website @ www.cdta.org or by calling 518-482-8822.



Troy / Wynantskill via RPI campus

between Downtown Troy, RPI and
Wynantskill

EFFECTIVE MAY 28, 2017

Schedule



From Wynantskill to Downtown

1	2	3	4	5	6	7	8	6	9
Vanderheyden Hall	Main & Atlantic	Pawling & Spring	Myrtle Avenue	Congress & 15th	Sage & Anderson Field	River & Front	4th & Fulton St	Sage & 87 Gymnasium	Sunset & Forsyth

MONDAY - FRIDAY

557a	601a	606a	609a	613a	615a	619a
657a	701a	706a	709a	713a	715a	719a
757a	801a	806a	809a	813a	815a	819a
857a	901a	906a	909a	913a	915a	919a
957a	1001a	1006a	1009a	1013a	1015a	1019a
1057a	1101a	1106a	1109a	1113a	1115a	1119a
1157a	1201p	1206p	1209p	1213p	1215p	1219p
1257p	101p	106p	109p	113p	115p	119p
157p	201p	206p	209p	213p	215p	219p
257p	301p	306p	309p	313p	315p	319p
400p	404p	409p	412p	416p	418p	422p
500p	504p	509p	512p	516p	518p	522p
600p	604p	609p	612p	616p	618p	622p
700p	704p	709p	712p	716p	718p	722p
800p	804p	809p	812p	816p	818p	822p

(These trips do not run when RPI is not in session)

F- FRIDAY ONLY

.....	900p	903p	905p	910p	915p	919p	924p
.....	1000p	1003p	1005p	1010p	1015p	1019p	1024p
.....	F1100p	1103p	1105p	1110p	1115p	1119p	1124p
.....	F1200a	1203a	1205a	1210a	1215a	1219a	1224a

From Downtown to Wynantskill

9	6	7	8	6	5	4	3	2	1
Sunset & Forsyth	Sage & Anderson Field	River & Front	4th & Fulton St	Sage & 87 Gymnasium	15th & Congress	Myrtle Avenue	Pawling & Spring	Main & Atlantic	Vanderheyden Hall

MONDAY - FRIDAY

.....	530a	535a	538a	540a	546a	547a	552a	556a
.....	630a	635a	638a	640a	646a	647a	652a	656a
.....	730a	735a	738a	740a	746a	747a	752a	756a
.....	830a	835a	838a	840a	846a	847a	852a	856a
.....	930a	935a	938a	940a	946a	947a	952a	956a
.....	1030a	1035a	1038a	1040a	1046a	1047a	1052a	1056a
.....	1130a	1135a	1138a	1140a	1146a	1147a	1152a	1156a
.....	1230p	1235p	1238p	1240p	1246p	1247p	1252p	1256p
.....	130p	135p	138p	140p	146p	147p	152p	156p
.....	230p	235p	238p	240p	246p	247p	252p	256p
.....	330p	335p	338p	340p	346p	347p	352p	356p
.....	430p	435p	438p	440p	446p	447p	452p	456p
.....	530p	535p	538p	540p	546p	547p	552p	556p
.....	630p	635p	638p	640p	646p	647p	652p	656p
.....	730p	735p	738p	740p	746p	747p	752p	756p
.....	830p	835p	838p	840p	846p

(These trips do not run when RPI is not in session)

F- FRIDAY ONLY

930p	934p	938p	943p	947p	949p	953p
1030p	1034p	1038p	1043p	1047p	1049p	1053p
F1130p	1134p	1138p	1143p	1147p	1149p	1153p
F1230a	1234a	1238a	1243a	1247a	1249a	1253a

From Wynantskill to Downtown

1	2	3	4	5	6	7	8	6	9
Vanderheyden Hall	Main & Atlantic	Pawling & Spring	Myrtle Avenue	Congress & 15th	Sage & Anderson Field	River & Front	4th & Fulton	Sage & 87 Gymnasium	Sunset & Forsyth

SATURDAY

856a	900a	904a	908a	911a	913a	917a
956a	1000a	1004a	1008a	1011a	1013a	1017a
1056a	1100a	1104a	1108a	1111a	1113a	1117a
1156a	1200p	1204p	1208p	1211p	1213p	1217p
1256p	100p	104p	108p	111p	113p	117p
156p	200p	204p	208p	211p	213p	217p
256p	300p	304p	308p	311p	313p	317p
356p	400p	404p	408p	411p	413p	417p
456p	500p	504p	508p	511p	513p	517p
556p	600p	604p	608p	611p	613p	617p
656p	700p	704p	708p	711p	713p	717p
756p	800p	804p	808p	811p	813p	817p

(These trips do not run when RPI is not in session)

.....	900p	903p	905p	910p	915p	919p	924p
.....	1000p	1003p	1005p	1010p	1015p	1019p	1024p
.....	1100p	1103p	1105p	1110p	1115p	1119p	1124p
.....	1200a	1203a	1205a	1210a	1215a	1219a	1224a

The timetable shows WHEN the bus stops.
 Times are approximate and depend upon traffic and weather conditions. Arrive at the bus stop 2-3 minutes early to avoid missing the bus.